

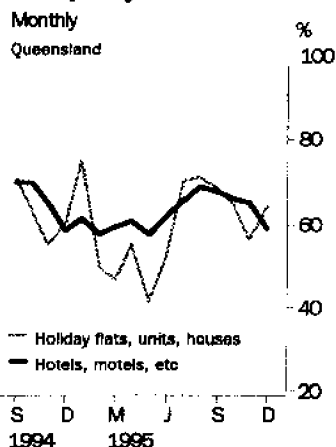
TOURIST ACCOMMODATION

QUEENSLAND

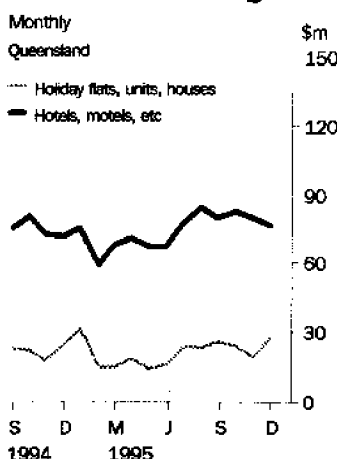
EMBARGOED UNTIL 11:30AM THURS 28 MARCH 1996

DECEMBER QTR KEY FIGURES

Occupancy rates



Accommodation takings



	Dec 94	Dec 95	change
Hotels, Motels and Guest Houses			
Rooms available (No.)	40 760	42 161	3.4 %
Room occupancy rate (%)	64.2	63.2	-1.0 pts
Takings from accommodation (\$'000)	225 332	239 041	6.1 %
Holiday Flats, Units and Houses			
Units, etc. available (No.)	18 030	18 784	4.2 %
Unit occupancy rate (%)	59.5	61.7	2.2 pts
Takings from accommodation (\$'000)	65 020	70 873	9.0 %
Caravan Parks			
Sites, cabins, etc. available (No.)	54 832	54 905	0.1 %
Site occupancy rate (%)	44.1	42.5	-1.6 pts
Takings from accommodation (\$'000)	23 725	24 118	1.7 %
Visitor Hostels			
Bed spaces available (No.)	7 978	8 283	3.8 %
Bed occupancy rate (%)	48.1	51.2	3.1 pts
Takings from accommodation (\$'000)	4 352	4 971	14.2 %

DECEMBER QTR KEY POINTS

INCREASES IN AVAILABLE CAPACITY

- Compared with December quarter 1994, available capacity was almost unchanged for caravan parks but increased substantially for all other accommodation types.

MIXED RESULTS IN OCCUPANCY

- For holiday flats, units and houses and for visitor hostels, increases in demand since December quarter 1994 exceeded increases in supply. The occupancy rate for holiday flats, units and houses thus increased from 59.5% to 61.7%, while for visitor hostels, the bed occupancy rate rose from 48.1% to 51.2%.
- Occupancy growth for hotels, motels and guest houses was exceeded by the increase in available capacity, resulting in a decrease in the room occupancy rate from 64.2% to 63.2%. For caravan parks, demand in terms of site nights occupied fell by 3.4% and the site occupancy rate decreased from 44.1% to 42.5%.

ACCOMMODATION TAKINGS UP

- Compared with December quarter 1994, all accommodation types recorded increases in takings from accommodation in excess of demand movements. Average takings increased from \$94 to \$98 per room night occupied for hotels, motels and guest houses and from \$66 to \$67 per holiday unit night occupied. For visitor hostels, average takings per guest night rose from \$12 to \$13, while average takings per caravan park site night were steady at \$11.

INQUIRIES

- For further information about these and related statistics, contact Grant Arnold on 07 3222 6149, or any ABS Office.

NOTES

FORTHCOMING ISSUES

ISSUE (Quarter)

EXPECTED RELEASE DATE

March 1996

21 June 1996

CHANGES IN THIS ISSUE

There are no changes in this issue.

R. A. CROCKETT

Deputy Commonwealth Statistician

TABLE 1 — SUMMARY OF HOTELS, MOTELS AND GUEST HOUSES WITH FACILITIES, QUEENSLAND

Particulars	Unit	Quarter ended				Year ended			
		September 1994	December 1994	March 1995	June 1995	September 1995	December 1995	December 1994	December 1995
		LICENSED HOTELS WITH FACILITIES							
Establishments	No.	264	263	265	263	264	264
Guest rooms	No.	18,194	18,207	18,422	18,725	19,029	19,108
Bed spaces	No.	54,602	54,952	54,975	56,353	57,085	57,401
Employment (persons)	No.	21,133	21,835	21,217	22,685	23,019	24,637
Room nights occupied	No.	1,165,651	1,164,730	1,057,895	1,026,671	1,160,409	1,190,730	4,375,838	4,435,705
Room occupancy rate	per cent	69.9	69.5	63.9	60.9	66.3	67.8	66.4	64.8
Guest nights	No.	2,204,653	2,166,646	1,983,642	1,848,933	2,138,277	2,195,469	8,184,221	8,166,321
Bed occupancy rate	per cent	44.0	42.9	40.1	36.5	40.7	41.6	41.4	39.8
Guest arrivals	No.	770,122	749,433	684,285	658,771	735,132	775,477	2,870,671	2,853,665
Average length of stay	days	2.9	2.9	2.9	2.8	2.9	2.8	2.9	2.9
Takings from accommodation	\$'000	134,644	144,092	129,395	127,759	145,662	152,275	515,861	555,092
MOTELS AND GUEST HOUSES WITH FACILITIES									
Establishments	No.	831	838	840	839	842	849
Guest rooms	No.	22,188	22,553	22,552	22,576	22,878	23,053
Bed spaces	No.	68,284	69,679	69,720	69,951	71,094	71,737
Employment (persons)	No.	8,749	8,758	8,469	8,649	8,776	8,769
Room nights occupied	No.	1,389,799	1,240,707	1,130,380	1,208,970	1,435,932	1,257,787	4,927,699	5,033,069
Room occupancy rate	per cent	68.1	59.9	55.8	58.9	68.2	59.5	60.7	60.7
Guest nights	No.	2,615,715	2,317,400	2,099,580	2,187,930	2,651,249	2,297,157	9,236,257	9,235,916
Bed occupancy rate	per cent	41.6	36.2	33.5	34.5	40.5	35.0	36.9	35.9
Guest arrivals	No.	1,270,482	1,120,996	984,921	1,097,971	1,269,264	1,105,450	4,450,173	4,457,606
Average length of stay	days	2.1	2.1	2.1	2.0	2.1	2.1	2.1	2.1
Takings from accommodation	\$'000	87,914	81,240	74,635	78,435	96,857	86,766	313,111	336,693
TOTAL HOTELS, MOTELS AND GUEST HOUSES WITH FACILITIES									
Establishments	No.	1,095	1,101	1,105	1,102	1,106	1,113
Guest rooms	No.	40,382	40,760	40,974	41,301	41,907	42,161
Bed spaces	No.	122,886	124,631	124,695	126,304	128,179	129,138
Employment (persons)	No.	29,882	30,593	29,686	31,334	31,795	33,406
Room nights occupied	No.	2,555,450	2,405,437	2,188,275	2,235,641	2,596,341	2,448,517	9,303,537	9,468,774
Room occupancy rate	per cent	68.9	64.2	59.4	59.8	67.3	63.2	63.2	62.5
Guest nights	No.	4,820,368	4,484,046	4,083,222	4,036,863	4,789,526	4,492,626	17,420,478	17,402,237
Bed occupancy rate	per cent	42.7	39.1	36.4	35.4	40.6	37.9	38.9	37.6
Guest arrivals	No.	2,040,604	1,870,429	1,669,206	1,756,742	2,004,396	1,880,927	7,320,844	7,311,271
Average length of stay	days	2.4	2.4	2.4	2.3	2.4	2.4	2.4	2.4
Takings from accommodation	\$'000	222,559	225,332	204,030	206,194	242,519	239,041	828,971	891,785

TABLE 2 — SUMMARY OF CARAVAN PARKS, QUEENSLAND

Particulars	Unit	Quarter ended				Year ended		December 1994	December 1995
		September 1994	December 1994	March 1995	June 1995	September 1995	December 1995		
SHORT-TERM CARAVAN PARKS									
Establishments	No.	239	238	238	238	239	242
Capacity									
On-site vans	No.	1,053	1,058	1,041	1,038	1,020	1,017
Other powered sites	No.	10,738	10,798	10,823	10,887	11,442	11,492
Unpowered sites	No.	7,895	7,936	7,785	8,122	8,024	7,992
Cabins, etc.	No.	1,303	1,313	1,322	1,270	1,373	1,414
Total capacity	No.	20,989	21,105	20,971	21,317	21,859	21,915
Sites occupied by long-term guests	No.	1,812	1,744	1,742	1,812	1,870	1,813
Other sites permanently reserved	No.	850	723	728	711	728	738
Employment (persons)	No.	896	888	863	904	924	930
Site nights occupied	No.	878,827	576,180	526,087	667,651	910,910	584,231	2,646,755	2,688,879
Site occupancy rate	per cent	45.6	29.7	27.9	34.4	45.3	29.0	34.2	34.2
Takings from accommodation	\$'000	11,012	7,221	6,666	8,672	12,074	7,781	32,488	35,193
LONG-TERM CARAVAN PARKS									
Establishments	No.	393	393	391	390	390	389
Capacity									
On-site vans	No.	4,745	4,704	4,740	4,731	4,747	4,748
Other powered sites	No.	21,436	21,644	21,363	21,323	21,064	20,997
Unpowered sites	No.	5,040	4,975	4,930	4,941	4,846	4,775
Cabins, etc.	No.	2,359	2,404	2,439	2,511	2,456	2,470
Total capacity	No.	33,580	33,727	33,472	33,506	33,113	32,990
Sites occupied by long-term guests	No.	14,886	14,382	14,191	14,408	14,173	13,656
Other sites permanently reserved	No.	513	480	524	588	543	576
Employment (persons)	No.	1,373	1,368	1,417	1,425	1,398	1,364
Site nights occupied	No.	1,807,303	1,646,586	1,552,456	1,677,301	1,749,825	1,562,271	6,765,517	6,541,853
Site occupancy rate	per cent	58.5	53.1	51.7	55.1	57.5	51.5	55.1	54.0
Takings from accommodation	\$'000	18,393	16,504	15,665	17,201	18,759	16,337	67,145	67,962
TOTAL CARAVAN PARKS									
Establishments	No.	632	631	629	628	629	631
Capacity									
On-site vans	No.	5,798	5,762	5,781	5,769	5,767	5,765
Other powered sites	No.	32,174	32,442	32,186	32,210	32,506	32,489
Unpowered sites	No.	12,935	12,911	12,715	13,063	12,870	12,767
Cabins, etc.	No.	3,662	3,717	3,761	3,781	3,829	3,884
Total capacity	No.	54,569	54,832	54,443	54,823	54,972	54,905
Sites occupied by long-term guests	No.	16,698	16,126	15,933	16,220	16,043	15,469
Other sites permanently reserved	No.	1,363	1,203	1,252	1,299	1,271	1,314
Employment (persons)	No.	2,269	2,256	2,280	2,329	2,322	2,294
Site nights occupied	No.	2,686,130	2,222,766	2,078,543	2,344,952	2,660,735	2,146,502	9,412,272	9,230,732
Site occupancy rate	per cent	53.5	44.1	42.5	47.1	52.6	42.5	47.0	46.2
Takings from accommodation	\$'000	29,404	23,725	22,331	25,873	30,833	24,118	99,633	103,155

TABLE 3 — SUMMARY OF HOLIDAY FLATS, UNITS AND HOUSES, QUEENSLAND

Particulars	Unit	Quarter ended				Year ended			
		September 1994	December 1994	March 1995	June 1995	September 1995	December 1995	December 1994	December 1995
Letting entities	No.	632	651	641	665	674	689
Flats, units and houses									
Single bedroom	No.	3,560	3,561	3,595	3,741	3,715	3,712
Multiple bedroom	No.	13,865	14,469	14,229	14,499	14,789	15,072
Total flats, units and houses	No.	17,425	18,030	17,824	18,240	18,504	18,784
Bed spaces	No.	70,544	73,510	72,628	74,175	75,383	76,837
Employment (persons) (a)	No.	2,325	2,435	2,384	2,473	2,502	2,575
Unit nights occupied	No.	1,137,951	985,128	918,795	816,790	1,193,523	1,064,771	3,753,919	3,993,879
Unit occupancy rate	per cent	71.2	59.5	57.3	49.3	70.1	61.7	60.2	59.7
Unit lettings	No.	163,216	167,280	148,765	149,871	193,273	181,087	592,475	672,996
Average length of stay	days	7.0	5.9	6.2	5.4	6.2	5.9	6.3	5.9
Takings from accommodation	\$'000	66,634	65,020	62,127	48,792	72,583	70,873	230,170	254,375

(a) Employment numbers exclude real estate agents and their employees.

TABLE 4 — SUMMARY OF VISITOR HOSTELS, QUEENSLAND

Particulars	Unit	Quarter ended				Year ended			
		September 1994	December 1994	March 1995	June 1995	September 1995	December 1995	December 1994	December 1995
Establishments	No.	116	118	114	118	121	121
Bed spaces	No.	7,791	7,978	7,876	8,025	8,209	8,283
Employment (persons)	No.	554	585	588	618	617	597
Guest nights	No.	380,506	352,680	327,541	363,789	434,632	389,847	1,413,911	1,515,809
Bed occupancy rate	per cent	53.1	48.1	46.2	50.0	57.5	51.2	48.8	51.3
Guest arrivals	No.	138,586	126,929	125,331	135,818	167,413	147,755	527,173	576,317
Average length of stay	days	2.7	2.8	2.6	2.7	2.6	2.6	2.7	2.6
Takings from accommodation	\$'000	4,554	4,352	4,044	4,503	5,621	4,971	16,643	19,139

**TABLE 5 — HOTELS, MOTELS AND GUEST HOUSES WITH FACILITIES BY STAR GRADING,
BRISBANE STATISTICAL DIVISION AND QUEENSLAND**

Particulars	Brisbane Statistical Division					Total
	Star grading					
	1 and 2	3	4	5	Ungraded	
ESTABLISHMENTS, CAPACITY AND EMPLOYMENT						
<i>December quarter 1994—</i>						
Establishments	40	69	7	4	14	134
Guest rooms	741	3,100	1,050	1,074	232	6,197
Bed spaces	2,094	8,844	3,333	2,608	651	17,530
Employment (persons)	510	2,013	879	1,537	350	5,289
<i>December quarter 1995—</i>						
Establishments	40	78	14	4	11	147
Guest rooms	761	2,860	2,441	889	240	7,191
Bed spaces	2,120	8,250	7,118	2,324	933	20,745
Employment (persons)	488	1,605	2,014	3,585	248	7,940
ROOM NIGHTS OCCUPIED						
<i>December quarter 1994</i>	37,611	215,155	71,085	83,482	10,840	418,173
<i>1995—</i>						
October	12,497	62,969	56,746	20,678	2,089	154,979
November	12,698	61,894	59,593	21,366	1,892	157,443
December	12,117	52,644	49,071	16,812	3,303	133,947
<i>December quarter 1995</i>	37,312	177,507	165,410	58,856	7,284	446,369
ROOM OCCUPANCY RATES (per cent)						
<i>December quarter 1994</i>	55.2	75.4	73.6	84.5	50.8	73.3
<i>1995—</i>						
October	53.0	71.0	75.0	75.0	46.8	70.5
November	55.6	72.1	81.4	80.1	43.8	74.0
December	51.4	59.6	64.8	61.0	44.4	60.2
<i>December quarter 1995</i>	53.3	67.6	73.7	72.0	44.9	68.1
GUEST NIGHTS						
<i>December quarter 1994</i>	64,295	365,940	116,538	109,519	17,536	673,828
<i>1995—</i>						
October	20,932	103,871	81,913	26,970	3,300	236,986
November	20,370	100,406	81,758	28,643	2,965	234,142
December	21,443	95,240	74,618	23,669	6,029	220,999
<i>December quarter 1995</i>	62,745	299,517	238,289	79,282	12,294	692,127
BED OCCUPANCY RATES (per cent)						
<i>December quarter 1994</i>	33.4	45.0	38.0	45.6	29.3	41.8
<i>1995—</i>						
October	31.9	40.6	37.1	37.4	21.4	37.6
November	32.0	40.6	38.3	41.1	19.9	38.4
December	32.6	37.4	33.8	32.9	20.8	34.4
<i>December quarter 1995</i>	32.2	39.5	36.4	37.1	20.8	36.8
GUEST ARRIVALS						
<i>December quarter 1994</i>	31,172	175,703	64,700	72,358	7,200	351,133
<i>1995—</i>						
October	10,247	50,248	39,346	12,280	1,482	113,603
November	9,766	49,315	46,080	12,280	1,524	118,965
December	10,114	47,546	44,378	11,939	2,065	116,042
<i>December quarter 1995</i>	30,127	147,109	129,804	36,499	5,071	348,610
AVERAGE LENGTH OF STAY (days)						
<i>December quarter 1994</i>	2.1	2.1	1.8	1.5	2.4	1.9
<i>December quarter 1995</i>	2.1	2.0	1.8	2.2	2.4	2.0
TAKINGS FROM ACCOMMODATION (\$'000)						
<i>December quarter 1994</i>	1,764	16,364	7,249	11,256	535	37,168
<i>1995—</i>						
October	591	4,603	6,309	3,140	103	14,746
November	603	4,512	6,900	3,287	89	15,391
December	573	3,860	5,402	2,427	260	12,522
<i>December quarter 1995</i>	1,767	12,974	18,610	8,854	452	42,659

TABLE 5—HOTELS, MOTELS AND GUEST HOUSES WITH FACILITIES BY STAR GRADING,
BRISBANE STATISTICAL DIVISION AND QUEENSLAND—continued

Particulars	Queensland						Total
	Star grading						
	1	2	3	4	5	Ungraded	
ESTABLISHMENTS, CAPACITY AND EMPLOYMENT							
<i>December quarter 1994—</i>							
Establishments	15	418	420	55	15	178	1,101
Guest rooms	228	7,611	15,981	8,276	4,351	4,313	40,760
Bed spaces	583	23,062	48,986	26,994	12,588	12,418	124,631
Employment (persons)	102	3,391	8,739	9,087	6,099	3,175	30,593
<i>December quarter 1995</i>							
Establishments	22	406	437	68	15	165	1,113
Guest rooms	371	7,233	16,155	10,015	4,164	4,223	42,161
Bed spaces	982	21,877	49,609	31,967	12,350	12,353	129,138
Employment (persons)	142	3,143	8,232	10,535	8,238	3,116	33,406
ROOM NIGHTS OCCUPIED							
<i>December quarter 1994</i>	8,417	354,434	963,720	549,381	324,996	204,489	2,405,437
<i>1995—</i>							
October	5,233	119,311	336,216	226,347	99,936	75,258	862,301
November	4,336	108,375	311,161	222,934	104,363	69,791	820,960
December	4,773	102,923	291,857	206,111	92,097	67,495	765,256
<i>December quarter 1995</i>	14,342	330,609	939,234	655,392	296,396	212,544	2,448,517
ROOM OCCUPANCY RATES (per cent)							
<i>December quarter 1994</i>	40.1	50.6	65.6	72.3	81.2	51.6	64.2
<i>1995—</i>							
October	45.5	53.2	67.1	72.9	77.4	58.8	66.1
November	39.0	50.0	64.2	74.2	83.5	56.4	65.1
December	41.5	45.9	58.3	66.4	71.3	51.8	58.6
<i>December quarter 1995</i>	42.0	49.7	63.2	71.1	77.4	55.6	63.2
GUEST NIGHTS							
<i>December quarter 1994</i>	13,679	636,692	1,812,835	1,050,533	582,540	387,767	4,484,046
<i>1995—</i>							
October	9,421	205,766	614,559	403,527	185,031	135,711	1,554,015
November	7,692	181,624	559,266	381,549	188,247	122,190	1,440,568
December	8,795	194,269	590,300	396,246	177,999	130,434	1,498,043
<i>December quarter 1995</i>	25,908	581,659	1,764,125	1,181,322	551,277	388,335	4,492,626
BED OCCUPANCY RATES (per cent)							
<i>December quarter 1994</i>	25.5	30.0	40.3	42.4	50.3	34.0	39.1
<i>1995—</i>							
October	30.9	30.3	40.0	40.7	48.3	36.7	39.0
November	26.1	27.7	37.6	39.8	50.8	34.2	37.3
December	28.9	28.6	38.4	40.0	46.5	34.2	37.4
<i>December quarter 1995</i>	28.7	28.9	38.7	40.2	48.5	35.0	37.9
GUEST ARRIVALS							
<i>December quarter 1994</i>	5,927	348,956	788,560	360,952	214,199	151,835	1,870,429
<i>1995—</i>							
October	4,508	118,407	267,908	148,723	56,939	50,401	646,886
November	3,939	100,730	248,153	151,770	58,290	45,468	608,350
December	4,073	109,008	261,267	154,367	52,474	44,502	625,691
<i>December quarter 1995</i>	12,520	328,145	777,328	454,860	167,703	140,371	1,880,927
AVERAGE LENGTH OF STAY (days)							
<i>December quarter 1994</i>	2.3	1.8	2.3	2.9	2.7	2.6	2.4
<i>December quarter 1995</i>	2.1	1.8	2.3	2.6	3.3	2.8	2.4
TAKINGS FROM ACCOMMODATION (\$'000)							
<i>December quarter 1994</i>	325	17,636	73,357	62,225	56,584	15,205	225,332
<i>1995—</i>							
October	190	6,033	26,789	26,197	17,036	6,554	82,798
November	159	5,469	24,293	25,936	17,643	6,359	79,858
December	171	5,708	23,557	24,455	16,172	6,322	76,385
<i>December quarter 1995</i>	519	17,210	74,639	76,588	50,851	19,235	239,041

TABLE 6 — HOTELS, MOTELS AND GUEST HOUSES WITH FACILITIES BY STATISTICAL DIVISION,
QUEENSLAND

Particulars	Brisbane (SD) (a)			Moreton (SD) (a)			Wide Bay-Burnett (SD)		
	Licensed hotels	Motels, etc.	Total	Licensed hotels	Motels, etc.	Total	Licensed hotels	Motels, etc.	Total
ESTABLISHMENTS, CAPACITY AND EMPLOYMENT									
<i>December quarter 1994—</i>									
Establishments	37	97	134	38	202	240	20	102	122
Guest rooms	2,454	3,743	6,197	5,768	5,096	10,864	572	1,833	2,405
Bed spaces	6,493	11,037	17,530	18,207	15,921	34,128	1,832	5,817	7,649
Employment (persons)	3,446	1,843	5,289	8,776	1,927	10,703	485	596	1,081
<i>December quarter 1995—</i>									
Establishments	37	110	147	38	188	226	18	106	124
Guest rooms	2,922	4,269	7,191	6,072	4,767	10,839	579	1,948	2,527
Bed spaces	7,889	12,856	20,745	19,263	14,816	34,079	1,794	6,296	8,090
Employment (persons)	5,943	1,997	7,940	9,025	1,822	10,847	560	638	1,198
ROOM NIGHTS OCCUPIED									
<i>December quarter 1994</i>	172,421	245,752	418,173	403,358	288,363	691,721	24,864	87,523	112,387
<i>1995—</i>									
October	65,789	89,190	154,979	137,191	90,643	227,834	9,660	34,452	44,112
November	67,778	89,665	157,443	145,160	81,581	226,741	7,550	27,784	35,334
December	56,923	77,024	133,947	144,165	88,952	233,117	7,931	28,544	36,475
<i>December quarter 1995</i>	190,490	255,879	446,369	426,516	261,176	687,692	25,141	90,780	115,921
ROOM OCCUPANCY RATES (per cent)									
<i>December quarter 1994</i>	76.4	71.4	73.3	76.0	61.7	69.3	47.2	51.9	50.8
<i>1995—</i>									
October	72.6	68.9	70.5	72.9	61.3	67.8	53.8	57.1	56.3
November	77.3	71.6	74.0	79.7	57.0	69.7	43.5	47.7	46.7
December	62.8	58.4	60.2	76.6	60.2	69.4	44.2	47.3	46.6
<i>December quarter 1995</i>	70.9	66.2	68.1	76.4	59.6	69.0	47.2	50.7	49.9
GUEST NIGHTS									
<i>December quarter 1994</i>	250,287	423,541	673,828	788,418	638,362	1,426,780	58,282	157,069	215,351
<i>1995—</i>									
October	85,848	151,138	236,986	273,814	191,256	465,070	23,269	59,992	83,261
November	87,594	146,548	234,142	278,828	168,774	447,602	17,211	46,194	63,405
December	80,211	140,788	220,999	304,934	206,357	511,291	21,082	56,019	77,101
<i>December quarter 1995</i>	253,653	438,474	692,127	857,576	566,387	1,423,963	61,562	162,205	223,767
BED OCCUPANCY RATES (per cent)									
<i>December quarter 1994</i>	41.9	41.7	41.8	47.1	43.8	45.5	34.6	29.3	30.6
<i>1995—</i>									
October	35.1	39.3	37.6	45.9	41.6	44.0	41.8	30.7	33.2
November	37.0	39.3	38.4	48.2	38.0	43.8	32.0	24.5	26.2
December	32.8	35.4	34.4	51.1	44.9	48.4	37.9	28.7	30.7
<i>December quarter 1995</i>	34.9	38.0	36.8	48.4	41.6	45.4	37.3	28.0	30.1
GUEST ARRIVALS									
<i>December quarter 1994</i>	133,091	218,042	351,133	232,732	235,946	468,678	31,294	105,854	137,148
<i>1995—</i>									
October	44,441	69,162	113,603	85,442	76,479	161,921	11,745	39,469	51,214
November	49,456	69,509	118,965	89,849	70,912	160,761	8,226	30,744	38,970
December	48,505	67,537	116,042	91,691	78,977	170,668	8,600	36,033	44,633
<i>December quarter 1995</i>	142,402	206,208	348,610	266,982	226,368	493,350	28,571	106,246	134,817
AVERAGE LENGTH OF STAY (days)									
<i>December quarter 1994</i>	1.9	1.9	1.9	3.4	2.7	3.0	1.9	1.5	1.6
<i>December quarter 1995</i>	1.8	2.1	2.0	3.2	2.5	2.9	2.2	1.5	1.7
TAKINGS FROM ACCOMMODATION (\$'000)									
<i>December quarter 1994</i>	18,599	18,569	37,168	50,612	19,457	70,069	1,979	4,650	6,629
<i>1995—</i>									
October	7,715	7,031	14,746	18,301	6,131	24,432	949	1,932	2,881
November	8,205	7,186	15,391	19,253	5,604	24,857	605	1,501	2,106
December	6,405	6,117	12,522	19,795	6,852	26,647	785	1,695	2,479
<i>December quarter 1995</i>	22,324	20,334	42,659	57,349	18,588	75,937	2,338	5,128	7,466

TABLE 6 — HOTELS, MOTELS AND GUEST HOUSES WITH FACILITIES BY STATISTICAL DIVISION, QUEENSLAND—continued

Particulars	Darling Downs (SD)			South-West (SD)		Fitzroy (SD)	
	Licensed hotels	Motels, etc.	Total	Total	Licensed hotels	Motels, etc.	Total
ESTABLISHMENTS, CAPACITY AND EMPLOYMENT							
<i>December quarter 1994—</i>							
Establishments	20	82	102	30	31	85	116
Guest rooms	385	1,414	1,799	470	1,086	2,058	3,144
Bed spaces	1,046	4,475	5,521	1,284	3,311	6,349	9,660
Employment (persons)	308	483	791	151	1,184	753	1,937
<i>December quarter 1995</i>							
Establishments	20	85	105	31	31	85	116
Guest rooms	387	1,441	1,828	502	1,084	2,068	3,152
Bed spaces	1,054	4,582	5,636	1,365	3,165	6,323	9,488
Employment (persons)	300	504	804	178	1,260	766	2,026
ROOM NIGHTS OCCUPIED							
<i>December quarter 1994</i>	13,505	62,834	76,339	16,281	55,336	113,386	168,722
<i>1995—</i>							
October	5,178	24,701	29,879	7,921	19,004	41,987	60,991
November	4,670	21,320	25,990	7,127	18,298	38,051	56,349
December	3,639	20,474	24,113	5,952	17,235	33,477	50,712
<i>December quarter 1995</i>	13,487	66,495	79,982	21,000	54,537	113,515	168,052
ROOM OCCUPANCY RATES (per cent)							
<i>December quarter 1994</i>	38.1	48.5	46.2	37.7	55.4	60.2	58.5
<i>1995—</i>							
October	43.2	55.3	52.7	50.9	56.6	65.5	62.4
November	40.2	49.5	47.5	47.3	56.3	61.3	59.6
December	30.3	45.9	42.6	38.2	52.2	52.2	52.2
<i>December quarter 1995</i>	37.9	50.2	47.6	45.5	55.0	59.7	58.1
GUEST NIGHTS							
<i>December quarter 1994</i>	22,049	116,133	138,182	24,566	103,277	188,437	291,714
<i>1995—</i>							
October	8,717	43,991	52,708	11,475	35,570	65,025	100,595
November	7,275	35,808	43,083	9,614	33,396	57,121	90,517
December	6,323	39,110	45,433	9,675	37,450	58,217	95,667
<i>December quarter 1995</i>	22,315	118,909	141,224	30,764	106,416	180,363	286,779
BED OCCUPANCY RATES (per cent)							
<i>December quarter 1994</i>	22.9	28.3	27.3	20.8	33.9	32.4	32.9
<i>1995—</i>							
October	26.7	31.0	30.2	27.1	36.3	33.2	34.2
November	23.0	26.2	25.6	23.5	35.2	30.1	31.8
December	19.4	27.6	26.0	22.9	38.8	29.7	32.7
<i>December quarter 1995</i>	23.0	28.3	27.3	24.5	36.7	31.0	32.9
GUEST ARRIVALS							
<i>December quarter 1994</i>	12,869	88,025	100,894	19,750	30,855	118,107	148,962
<i>1995—</i>							
October	5,554	32,844	38,398	7,687	11,000	40,557	51,557
November	4,801	26,619	31,420	6,022	10,980	35,789	46,769
December	4,540	29,580	34,120	6,202	9,801	38,639	48,440
<i>December quarter 1995</i>	14,895	89,043	103,938	19,911	31,781	114,985	146,766
AVERAGE LENGTH OF STAY (days)							
<i>December quarter 1994</i>	1.7	1.3	1.4	1.2	3.3	1.6	2.0
<i>December quarter 1995</i>	1.5	1.3	1.4	1.5	3.3	1.6	2.0
TAKINGS FROM ACCOMMODATION (\$'000)							
<i>December quarter 1994</i>	713	3,458	4,171	802	5,476	6,494	11,970
<i>1995—</i>							
October	281	1,365	1,647	409	1,982	2,401	4,383
November	255	1,146	1,401	359	1,790	2,219	4,009
December	194	1,147	1,342	311	2,126	1,987	4,114
<i>December quarter 1995</i>	730	3,658	4,389	1,079	5,898	6,607	12,505

TABLE 6 — HOTELS, MOTELS AND GUEST HOUSES WITH FACILITIES BY STATISTICAL DIVISION,
QUEENSLAND—continued

Particulars	Central-West (SD)			Mackay (SD)		Northern (SD)	
	Total	Licensed hotels	Motels, etc.	Total	Licensed hotels	Motels, etc.	Total
ESTABLISHMENTS, CAPACITY AND EMPLOYMENT							
<i>December quarter 1994—</i>							
Establishments	16	28	62	90	21	57	78
Guest rooms	300	2,718	1,597	4,315	782	1,837	2,619
Bed spaces	896	8,933	5,081	14,014	2,166	5,663	7,829
Employment (persons)	135	2,680	609	3,289	1,119	554	1,673
<i>December quarter 1995—</i>							
Establishments	16	27	61	88	21	56	77
Guest rooms	297	2,702	1,533	4,235	790	1,747	2,537
Bed spaces	904	8,865	4,682	13,547	2,166	5,493	7,659
Employment (persons)	125	2,641	576	3,217	1,137	490	1,627
ROOM NIGHTS OCCUPIED							
<i>December quarter 1994</i>	<i>12,714</i>	<i>172,044</i>	<i>80,218</i>	<i>252,262</i>	<i>42,065</i>	<i>89,812</i>	<i>131,877</i>
<i>1995—</i>							
October	5,102	58,210	29,122	87,332	14,364	33,078	47,442
November	3,726	50,435	26,596	77,031	14,415	29,763	44,178
December	3,236	50,756	26,586	77,342	12,721	26,411	39,132
<i>December quarter 1995</i>	<i>12,064</i>	<i>159,401</i>	<i>82,304</i>	<i>241,705</i>	<i>41,500</i>	<i>89,252</i>	<i>130,752</i>
ROOM OCCUPANCY RATES (per cent)							
<i>December quarter 1994</i>	<i>46.1</i>	<i>68.8</i>	<i>54.6</i>	<i>63.5</i>	<i>58.5</i>	<i>53.1</i>	<i>54.7</i>
<i>1995—</i>							
October	55.4	69.5	61.3	66.5	58.7	61.1	60.3
November	41.8	62.2	57.8	60.6	60.8	56.8	58.0
December	35.1	60.6	55.9	58.9	51.9	48.8	49.8
<i>December quarter 1995</i>	<i>44.2</i>	<i>64.1</i>	<i>58.4</i>	<i>62.0</i>	<i>57.1</i>	<i>55.5</i>	<i>56.0</i>
GUEST NIGHTS							
<i>December quarter 1994</i>	<i>21,059</i>	<i>375,480</i>	<i>143,336</i>	<i>518,816</i>	<i>63,444</i>	<i>151,824</i>	<i>215,268</i>
<i>1995—</i>							
October	8,816	120,281	47,642	167,923	19,123	53,993	73,116
November	6,087	106,199	45,224	151,423	18,873	48,210	67,083
December	6,092	108,698	53,005	161,703	17,503	48,338	65,841
<i>December quarter 1995</i>	<i>20,995</i>	<i>335,178</i>	<i>145,871</i>	<i>481,049</i>	<i>55,499</i>	<i>150,541</i>	<i>206,040</i>
BED OCCUPANCY RATES (per cent)							
<i>December quarter 1994</i>	<i>25.5</i>	<i>45.7</i>	<i>30.7</i>	<i>40.2</i>	<i>31.8</i>	<i>29.1</i>	<i>29.9</i>
<i>1995—</i>							
October	31.5	43.8	32.8	40.0	28.5	31.7	30.8
November	22.4	39.9	32.2	37.3	29.0	29.3	29.2
December	21.7	39.6	36.5	38.5	26.1	28.4	27.7
<i>December quarter 1995</i>	<i>25.2</i>	<i>41.1</i>	<i>33.9</i>	<i>38.6</i>	<i>27.9</i>	<i>29.8</i>	<i>29.2</i>
GUEST ARRIVALS							
<i>December quarter 1994</i>	<i>14,404</i>	<i>115,392</i>	<i>76,163</i>	<i>191,555</i>	<i>41,539</i>	<i>82,713</i>	<i>124,252</i>
<i>1995—</i>							
October	5,878	30,866	26,232	57,098	11,957	28,323	40,280
November	3,948	29,247	22,085	51,332	11,174	26,037	37,211
December	4,314	29,650	28,068	57,718	10,679	25,883	36,562
<i>December quarter 1995</i>	<i>14,140</i>	<i>89,763</i>	<i>76,385</i>	<i>166,148</i>	<i>33,810</i>	<i>80,243</i>	<i>114,053</i>
AVERAGE LENGTH OF STAY (days)							
<i>December quarter 1994</i>	<i>1.5</i>	<i>3.3</i>	<i>1.9</i>	<i>2.7</i>	<i>1.5</i>	<i>1.8</i>	<i>1.7</i>
<i>December quarter 1995</i>	<i>1.5</i>	<i>3.7</i>	<i>1.9</i>	<i>2.9</i>	<i>1.6</i>	<i>1.9</i>	<i>1.8</i>
TAKINGS FROM ACCOMMODATION (\$'000)							
<i>December quarter 1994</i>	<i>665</i>	<i>23,609</i>	<i>4,539</i>	<i>28,148</i>	<i>3,661</i>	<i>4,956</i>	<i>8,617</i>
<i>1995—</i>							
October	287	6,547	1,720	8,266	1,429	1,977	3,406
November	197	5,557	1,540	7,097	1,443	1,731	3,175
December	170	5,723	1,613	7,336	1,240	1,600	2,840
<i>December quarter 1995</i>	<i>654</i>	<i>17,827</i>	<i>4,873</i>	<i>22,700</i>	<i>4,113</i>	<i>5,309</i>	<i>9,421</i>

TABLE 6—HOTELS, MOTELS AND GUEST HOUSES WITH FACILITIES BY STATISTICAL DIVISION,
QUEENSLAND—continued

Particulars	Far North (SD)			North-West (SD)			Queensland		
	Licensed hotels	Motels, etc.	Total	Licensed hotels	Motels, etc.	Total	Licensed hotels	Motels, etc.	Total
ESTABLISHMENTS, CAPACITY AND EMPLOYMENT									
<i>December quarter 1994—</i>									
Establishments	42	101	143	13	17	30	263	838	1,101
Guest rooms	4,057	4,001	8,058	222	367	589	18,207	22,553	40,760
Bed spaces	11,984	12,527	24,511	569	1,040	1,609	54,952	69,679	124,631
Employment (persons)	3,575	1,686	5,261	175	108	283	21,835	8,758	30,593
<i>December quarter 1995—</i>									
Establishments	43	107	150	15	18	33	264	849	1,113
Guest rooms	4,116	4,289	8,405	262	386	648	19,108	23,053	42,161
Bed spaces	12,044	13,817	25,861	668	1,096	1,764	57,401	71,737	129,138
Employment (persons)	3,480	1,657	5,137	190	117	307	24,637	8,769	33,406
ROOM NIGHTS OCCUPIED									
<i>December quarter 1994</i>	267,731	232,269	500,000	9,114	15,847	24,961	1,164,730	1,240,707	2,405,437
<i>1995—</i>									
October	93,114	92,079	185,193	4,266	7,250	11,516	409,109	453,192	862,301
November	90,455	85,476	175,931	4,041	7,069	11,110	405,059	415,901	820,960
December	78,465	74,113	152,578	3,081	5,571	8,652	376,562	388,694	765,256
<i>December quarter 1995</i>	262,034	251,668	513,702	11,388	19,890	31,278	1,190,730	1,257,787	2,448,517
ROOM OCCUPANCY RATES (per cent)									
<i>December quarter 1994</i>	71.7	63.1	67.5	44.6	46.9	46.1	69.5	59.9	64.2
<i>1995—</i>									
October	73.0	69.3	71.1	52.5	60.6	57.3	69.1	63.7	66.1
November	73.3	66.4	69.8	51.4	61.0	57.2	70.7	60.4	65.1
December	61.5	55.7	58.6	37.9	46.6	43.1	63.6	54.4	58.6
<i>December quarter 1995</i>	69.2	63.8	66.4	47.2	56.0	52.5	67.8	59.5	63.2
GUEST NIGHTS									
<i>December quarter 1994</i>	488,784	435,219	924,003	10,967	23,512	34,479	2,166,646	2,317,400	4,484,046
<i>1995—</i>									
October	170,459	167,844	338,303	5,205	10,557	15,762	745,305	808,710	1,554,015
November	161,111	151,290	312,401	5,032	10,179	15,211	718,185	722,383	1,440,568
December	149,706	141,286	290,992	3,966	9,283	13,249	731,979	766,064	1,498,043
<i>December quarter 1995</i>	481,276	460,420	941,696	14,203	30,019	44,222	2,195,469	2,297,157	4,492,626
BED OCCUPANCY RATES (per cent)									
<i>December quarter 1994</i>	44.3	37.8	41.0	21.0	24.6	23.3	42.9	36.2	39.1
<i>1995—</i>									
October	45.7	39.2	42.2	25.1	31.1	28.8	41.9	36.6	39.0
November	44.6	36.5	40.3	25.1	31.0	28.7	41.7	33.8	37.3
December	40.1	33.0	36.3	19.2	27.3	24.2	41.2	34.5	37.4
<i>December quarter 1995</i>	43.4	36.2	39.6	23.1	29.8	27.2	41.6	35.0	37.9
GUEST ARRIVALS									
<i>December quarter 1994</i>	141,671	151,411	293,082	5,398	15,173	20,571	749,433	1,120,996	1,870,429
<i>1995—</i>									
October	53,819	56,769	110,588	2,499	6,163	8,662	259,345	387,541	646,886
November	53,028	52,166	105,194	2,371	5,387	7,758	260,643	347,707	608,350
December	48,968	50,629	99,597	1,788	5,607	7,395	255,489	370,202	625,691
<i>December quarter 1995</i>	155,815	159,564	315,379	6,658	17,157	23,815	775,477	1,105,450	1,880,927
AVERAGE LENGTH OF STAY (days)									
<i>December quarter 1994</i>	3.5	2.9	3.2	2.0	1.5	1.7	2.9	2.1	2.4
<i>December quarter 1995</i>	3.1	2.9	3.0	2.1	1.7	1.9	2.8	2.1	2.4
TAKINGS FROM ACCOMMODATION (\$'000)									
<i>December quarter 1994</i>	38,832	16,884	55,716	429	946	1,376	144,092	81,240	225,332
<i>1995—</i>									
October	14,411	7,302	21,713	197	432	629	51,928	30,871	82,798
November	14,101	6,558	20,659	192	415	607	51,509	28,349	79,858
December	12,353	5,796	18,148	141	334	474	48,838	27,546	76,385
<i>December quarter 1995</i>	40,865	19,656	60,520	530	1,181	1,711	152,275	86,766	239,041

(a) Brisbane SD data from September quarter 1995 include 5 establishments previously included in Moreton SD data.

TABLE 7—HOTELS, MOTELS AND GUEST HOUSES WITH FACILITIES: STATISTICAL DIVISIONS AND

Statistical Divisions and selected Subdivisions and Statistical Local Areas	Establish- ments	Guest rooms	Bed spaces	Employ- ment (persons)	Room nights occupied				Room occupancy rates (per cent)			
					Oct.	Nov.	Dec.	Dec. qtr	Oct.	Nov.	Dec.	Dec. qtr
Ascot	4	77	232	20	1,614	1,471	1,311	4,396	67.6	63.7	54.9	62.1
Aspley	4	67	211	24	1,203	1,324	1,208	3,735	57.9	65.9	58.2	60.6
Brisbane City Core (a)												
City—Inner and Remainder	15	2,687	7,334	5,032	61,841	64,490	54,888	181,219	77.0	83.0	65.9	75.1
Kangaroo Point	9	400	1,248	238	7,990	8,057	6,966	23,013	64.4	67.1	56.2	62.5
Spring Hill	14	1,293	3,951	703	30,855	31,663	24,937	87,455	77.0	81.6	62.2	73.5
Balance	13	522	1,276	279	10,821	10,364	9,436	30,621	66.9	66.2	58.3	63.8
Licensed hotels	14	2,534	6,887	4,945	59,079	61,271	50,913	171,263	75.2	80.6	64.8	73.5
Motels and guest houses	37	2,368	6,922	1,307	52,428	53,303	45,314	151,045	74.4	78.2	61.7	71.2
Total	51	4,902	13,809	6,252	111,507	114,574	96,227	322,308	74.8	79.5	63.3	72.4
Chermside	3	84	248	24	1,551	1,428	1,254	4,233	59.6	56.7	48.2	54.8
Hamilton	9	312	972	161	6,946	6,733	5,664	19,343	71.8	71.9	58.6	67.4
Brisbane City (SSD)—Balance	44	1,173	3,462	938	21,878	22,535	18,338	62,751	60.2	64.0	50.4	58.1
Brisbane City (SSD)	115	6,615	18,934	7,419	144,699	148,065	124,002	416,766	71.6	75.7	60.5	69.1
Caboolture (S)—Part A (b)	8	129	401	185	2,032	1,745	2,252	6,029	50.8	45.1	56.3	50.8
Logan City (SSD)	3	42	136	62	818	750	726	2,294	62.8	59.5	55.8	59.4
Redcliffe City (SSD)	5	105	324	46	1,784	1,657	1,663	5,104	54.8	52.6	51.1	52.8
Redland Shire (SSD)	6	91	254	140	1,352	1,325	1,585	4,262	47.9	48.5	56.2	50.9
Balance	10	209	696	88	4,294	3,901	3,719	11,914	66.3	62.2	60.9	63.2
Brisbane (SD) (b)	147	7,191	20,745	7,940	154,979	157,443	133,947	446,369	70.5	74.0	60.2	68.1
Caloundra (C)—Parts A and B	25	460	1,445	286	7,116	6,080	6,817	20,013	49.9	44.1	47.8	47.3
Esk (S)	5	39	127	10	426	426	316	1,168	35.2	36.4	26.1	32.6
Gold Coast (C)—Part B (c)												
Bilinga	5	66	255	17	1,276	1,076	1,096	3,448	62.4	54.3	53.6	56.8
Burleigh Heads	6	159	525	52	3,025	2,999	2,784	8,808	61.4	62.9	56.5	60.2
Coolangatta	6	259	835	104	5,262	4,498	4,777	14,537	65.5	57.9	59.5	61.0
Labrador	5	74	257	21	1,495	1,273	1,469	4,237	65.2	57.3	64.0	62.2
Mermaid Beach	12	168	520	54	3,387	3,044	3,191	9,622	65.0	60.4	61.3	62.3
Miami	6	103	331	15	1,742	1,436	1,689	4,867	54.6	46.5	52.9	51.4
Palm Beach	12	152	447	40	2,101	1,945	2,251	6,297	44.6	42.7	47.8	45.0
Southport	6	246	734	118	4,493	4,349	4,114	12,956	58.9	58.9	53.9	57.2
Surfers Paradise	25	3,679	11,584	2,563	84,703	89,985	94,224	268,912	74.3	81.5	82.6	79.4
Maroochy (S)—Parts A and B	50	1,616	4,686	1,655	29,553	24,898	29,745	84,196	59.0	51.4	59.4	56.6
Noosa (S)—Parts A and B	15	468	1,470	470	12,009	10,816	10,054	32,879	82.8	77.0	69.3	76.4
Balance	48	3,350	10,863	5,442	71,246	73,916	70,590	215,752	68.6	73.5	68.0	70.0
Moreton (SD) (b)	226	10,839	34,079	10,847	227,834	226,741	233,117	687,692	67.8	69.7	69.4	69.0
Bundaberg (C)	24	450	1,375	141	9,002	8,436	7,432	24,870	64.5	62.5	53.3	60.1
Burnett (S)—Parts A and B	9	105	451	67	1,438	1,036	1,329	3,803	44.2	34.4	40.8	39.9
Cooloola (S)	15	288	910	96	4,762	4,084	4,676	13,522	53.3	47.3	52.4	51.0
Hervey Bay (C)	21	731	2,441	506	13,619	9,018	10,976	33,613	60.1	41.1	48.4	50.0
Isis (S)	5	66	211	19	924	805	1,036	2,765	45.2	40.7	50.6	45.5
Kingaroy (S)	6	139	430	61	2,451	1,925	1,500	5,876	56.9	46.2	34.8	45.9
Kolan (S)	4	54	183	22	904	751	1,062	2,717	54.0	46.4	63.4	54.7
Maryborough (C)	13	320	977	118	5,372	4,306	3,533	13,211	54.2	44.9	35.6	44.9
Miriam Vale (S)	7	123	417	76	2,026	1,830	2,115	5,971	53.1	49.6	55.5	52.8
Nanango (S)	4	50	126	12	627	585	621	1,833	40.5	39.0	40.1	39.8
Balance	16	201	569	80	2,987	2,558	2,195	7,740	47.9	42.4	35.2	41.9
Wide Bay-Burnett (SD)	124	2,527	8,090	1,198	44,112	35,334	36,475	115,921	56.3	46.7	46.6	49.9
Dalby (T)	7	148	442	54	2,271	2,030	2,057	6,358	49.5	45.7	44.8	46.7
Goondiwindi (T)	9	164	510	88	3,255	2,395	2,861	8,511	64.0	50.4	56.3	57.0
Inglewood (S)	4	38	117	13	510	381	430	1,321	43.3	33.4	36.5	37.8
Jondaryan (S)	5	46	147	10	350	327	358	1,035	24.5	23.7	25.1	24.5
Murilla (S)	4	57	160	22	838	735	862	2,435	47.4	43.0	48.8	46.4
Stanthorpe (S)	9	151	464	67	1,896	1,800	1,340	5,036	40.5	39.7	28.6	36.3
Toowoomba (C)	33	716	2,280	325	13,831	12,735	10,698	37,264	62.3	59.3	48.2	56.6
Warwick (S)												
Central	11	200	650	64	3,452	2,490	2,476	8,418	55.7	41.5	39.9	45.8
Balance	4	74	267	51	1,111	992	1,054	3,157	48.4	44.7	46.9	46.7
Total	15	274	917	115	4,563	3,482	3,530	11,575	53.7	42.4	41.8	46.0
Balance	19	234	599	110	2,365	2,105	1,977	6,447	32.6	30.0	27.3	29.9
Darling Downs (SD)	105	1,828	5,636	804	29,879	25,990	24,113	79,982	52.7	47.5	42.6	47.6
Balonne (S)	5	98	276	35	1,323	1,203	943	3,469	43.5	40.9	31.0	38.5
Murweh (S)	6	106	259	27	1,239	1,156	949	3,344	37.7	36.4	28.9	34.3
Roma (T)	8	169	470	66	3,725	3,420	3,096	10,241	71.1	67.5	59.1	65.9
Balance	12	129	360	50	1,634	1,348	964	3,946	40.9	34.8	24.1	33.2
South-West (SD)	31	502	1,365	178	7,921	7,127	5,952	21,000	50.9	47.3	38.2	45.5

SELECTED SUBDIVISIONS AND STATISTICAL LOCAL AREAS, QUEENSLAND, DECEMBER QUARTER 1995

<i>Guest nights</i>				<i>Guest arrivals</i>				<i>Takings from accommodation (\$'000)</i>			
<i>Oct.</i>	<i>Nov.</i>	<i>Dec.</i>	<i>Dec. qtr</i>	<i>Oct.</i>	<i>Nov.</i>	<i>Dec.</i>	<i>Dec. qtr</i>	<i>Oct.</i>	<i>Nov.</i>	<i>Dec.</i>	<i>Dec. qtr</i>
2,486	2,059	2,334	6,879	1,751	1,436	1,545	4,732	105	95	86	286
2,284	2,385	2,350	7,019	1,562	1,524	1,556	4,642	71	71	69	211
82,607	86,397	79,713	248,717	45,847	47,772	46,040	139,659	7,609	8,248	6,557	22,414
15,144	14,041	13,581	42,766	5,403	6,245	6,043	17,691	793	786	681	2,260
47,996	47,288	42,931	138,215	19,024	23,389	22,701	65,114	2,695	2,762	2,160	7,617
18,129	16,772	17,568	52,469	6,966	7,554	8,453	22,973	798	779	684	2,261
75,500	78,179	70,849	224,528	39,836	45,294	44,605	129,735	7,377	7,886	6,117	21,380
88,376	86,319	82,944	257,639	37,404	39,666	38,632	115,702	4,518	4,689	3,965	13,172
163,876	164,498	153,793	482,167	77,240	84,960	83,237	245,437	11,895	12,575	10,082	34,552
2,917	2,545	2,338	7,800	1,746	1,482	1,408	4,636	96	88	77	261
11,195	10,621	9,547	31,363	6,547	5,999	5,593	18,139	632	625	514	1,771
37,172	36,803	32,598	106,573	15,888	15,680	13,941	45,509	1,372	1,393	1,135	3,901
219,930	218,911	202,960	641,801	104,734	111,081	107,280	323,095	14,171	14,848	11,962	40,981
3,466	2,892	4,030	10,388	2,553	2,215	2,708	7,476	114	99	124	337
1,441	1,289	1,572	4,302	689	740	736	2,165	48	47	48	143
2,669	2,352	2,471	7,492	854	691	746	2,291	75	66	69	210
2,269	2,266	3,047	7,582	1,279	1,172	1,438	3,889	64	64	81	209
7,211	6,432	6,919	20,562	3,494	3,066	3,134	9,694	273	267	239	779
236,986	234,142	220,999	692,127	113,603	118,965	116,042	348,610	14,746	15,391	12,522	42,659
14,942	12,023	15,802	42,767	8,099	6,835	8,692	23,626	414	364	463	1,241
599	612	458	1,669	484	503	365	1,352	18	19	13	49
2,334	2,369	2,589	7,292	718	633	751	2,102	62	51	72	186
5,505	5,380	5,895	16,780	2,402	2,220	2,479	7,101	172	189	205	566
10,689	8,793	10,131	29,613	2,891	2,746	2,636	8,273	377	313	409	1,099
2,197	1,902	2,240	6,339	1,585	1,467	1,513	4,565	49	41	52	141
6,864	6,065	6,824	19,753	3,617	3,203	3,333	10,153	136	121	169	427
3,640	2,826	3,659	10,125	2,247	1,869	2,316	6,432	80	58	97	235
4,287	3,952	5,482	13,721	2,273	2,046	2,576	6,895	91	79	112	283
9,511	8,578	8,405	26,494	3,421	3,335	3,462	10,218	280	281	274	835
171,468	179,384	211,623	562,475	56,975	63,675	65,814	186,464	8,797	9,524	10,164	28,485
66,391	52,145	69,577	188,113	22,565	20,173	22,678	65,416	3,111	2,499	3,489	9,099
28,297	24,445	24,311	77,053	8,661	7,752	8,422	24,835	1,729	1,565	1,525	4,818
138,346	139,128	144,295	421,769	45,983	44,304	45,631	135,918	9,117	9,754	9,603	28,473
465,070	447,602	511,291	1,423,963	161,921	160,761	170,668	493,350	24,432	24,857	26,647	75,937
13,168	12,693	13,116	38,977	9,270	8,199	8,765	26,234	464	424	389	1,277
3,248	2,622	3,445	9,315	1,812	1,464	1,485	4,761	66	50	58	174
8,740	7,525	9,791	26,056	6,274	5,272	6,348	17,894	241	204	241	687
32,119	19,568	27,755	79,442	15,788	9,106	11,153	36,047	1,231	706	988	2,925
1,670	1,714	1,968	5,352	1,569	1,592	1,830	4,991	40	33	48	121
3,799	2,749	2,381	8,929	2,557	2,078	1,801	6,436	116	95	71	282
1,744	1,394	2,328	5,466	1,468	1,164	1,967	4,599	46	39	51	135
9,210	7,090	6,838	23,138	6,106	4,916	5,069	16,091	296	236	208	741
3,799	3,350	4,811	11,960	1,965	1,575	2,586	6,126	230	188	306	724
989	785	833	2,607	681	493	473	1,647	27	25	26	79
4,775	3,915	3,835	12,525	3,724	3,111	3,156	9,991	124	106	93	323
83,261	63,405	77,101	223,767	51,214	38,970	44,633	134,817	2,881	2,106	2,479	7,466
3,417	3,185	3,687	10,289	2,661	2,547	2,789	7,997	112	102	108	322
5,523	3,854	5,831	15,208	4,982	3,391	5,331	13,704	188	134	177	499
735	527	567	1,829	664	443	466	1,573	19	14	15	48
583	596	612	1,791	499	501	529	1,529	19	18	20	57
1,385	1,100	1,536	4,021	1,237	950	1,430	3,617	41	35	43	118
3,338	2,918	2,345	8,601	2,269	1,931	1,809	6,009	89	76	68	233
25,271	21,813	20,553	67,637	15,930	14,313	13,095	43,338	833	754	613	2,200
6,386	3,906	4,745	15,037	5,154	3,161	4,054	12,369	171	122	136	429
2,730	2,357	2,535	7,622	2,333	1,944	2,231	6,508	68	54	63	185
9,116	6,263	7,280	22,659	7,487	5,105	6,285	18,877	240	176	198	614
3,340	2,827	3,022	9,189	2,669	2,239	2,386	7,294	105	93	99	297
52,708	43,083	45,433	141,224	38,398	31,420	34,120	103,938	1,647	1,401	1,342	4,389
1,744	1,477	1,664	4,885	1,241	915	899	3,055	71	63	48	182
1,828	1,598	1,532	4,958	1,026	854	820	2,700	59	54	48	161
5,438	4,605	4,813	14,856	3,694	3,050	3,268	10,012	203	184	172	559
2,465	1,934	1,666	6,065	1,726	1,203	1,215	4,144	76	58	44	177
11,475	9,614	9,675	30,764	7,687	6,022	6,202	19,911	409	359	311	1,079

TABLE 7 — HOTELS, MOTELS AND GUEST HOUSES WITH FACILITIES: STATISTICAL DIVISIONS AND

Statistical Divisions and selected Subdivisions and Statistical Local Areas	Establish- ments	Guest rooms	Bed spaces	Employ- ment (persons)	Room nights occupied			Room occupancy rates (per cent)				
					Oct.	Nov.	Dec.	Dec.			Dec.	
					Oct.	Nov.	Dec.	qtr	Oct.	Nov.	Dec.	qtr
Banana (S), Fitzroy (S) and Mount Morgan (S)	12	225	636	85	3,803	2,911	2,566	9,280	54.5	43.1	36.8	44.8
Bauhinia (S)	5	59	178	27	537	382	364	1,283	29.4	21.6	24.0	25.1
Calliope (S) — Parts A and B	8	208	562	148	4,865	5,178	5,208	15,251	75.4	83.0	80.8	79.7
Duarina (S)	6	113	320	72	1,818	1,876	1,341	5,035	51.9	55.3	38.3	48.4
Emerald (S)	10	268	720	181	5,325	5,378	3,837	14,540	64.1	66.9	46.2	59.0
Gladstone (C)	20	492	1,507	243	9,705	8,941	6,980	25,626	63.6	60.6	45.8	56.6
Livingstone (S)	15	662	2,125	786	11,938	10,660	11,740	34,338	58.2	53.7	57.2	56.4
Rockhampton (C)	37	1,089	3,329	452	22,596	20,644	18,379	61,619	66.9	63.2	54.9	61.7
Balance	3	36	111	32	404	379	297	1,080	36.2	35.1	26.6	32.6
<i>Fitzroy (SD)</i>	<i>116</i>	<i>3,152</i>	<i>9,488</i>	<i>2,026</i>	<i>60,991</i>	<i>56,349</i>	<i>50,712</i>	<i>168,052</i>	<i>62.4</i>	<i>59.6</i>	<i>52.2</i>	<i>58.1</i>
Barcardine (S)	4	51	161	20	641	688	475	1,804	40.5	45.0	30.0	38.4
Longreach (S)	5	156	475	59	2,999	1,780	1,525	6,304	62.0	38.0	31.5	43.9
Balance	7	90	268	46	1,462	1,258	1,236	3,956	52.4	46.6	44.3	47.8
<i>Central-West (SD)</i>	<i>16</i>	<i>297</i>	<i>904</i>	<i>125</i>	<i>5,102</i>	<i>3,726</i>	<i>3,236</i>	<i>12,064</i>	<i>55.4</i>	<i>41.8</i>	<i>35.1</i>	<i>44.2</i>
Belyando (S)	7	123	324	81	2,046	1,938	1,264	5,248	53.7	52.5	33.1	46.4
Mackay (C) — Parts A and B	47	1,458	4,277	772	29,532	25,162	26,611	81,305	65.3	57.5	58.9	60.6
Sarina (S)	6	97	330	60	2,131	2,039	1,987	6,157	70.9	70.1	66.1	69.0
Whitsunday (S)	23	2,469	8,375	2,238	52,200	46,509	46,298	145,007	68.2	62.8	60.5	63.8
Balance	5	88	241	66	1,423	1,383	1,182	3,988	52.2	52.4	43.3	49.3
<i>Mackay (SD)</i>	<i>88</i>	<i>4,235</i>	<i>13,547</i>	<i>3,217</i>	<i>87,332</i>	<i>77,031</i>	<i>77,342</i>	<i>241,705</i>	<i>66.5</i>	<i>60.6</i>	<i>58.9</i>	<i>62.0</i>
Bowen (S)	10	232	681	86	2,775	2,463	2,311	7,549	38.6	35.4	32.1	35.4
Burdekin (S)	7	94	292	28	1,866	1,810	1,658	5,334	64.0	64.2	56.9	61.7
Charters Towers (C)	8	130	436	59	2,317	2,381	1,709	6,407	57.5	61.1	42.4	53.6
Townsville (C)	7	585	1,622	848	11,560	11,794	9,728	33,082	63.7	67.2	53.6	61.5
City	4	155	486	36	3,034	2,954	2,721	8,709	63.1	63.5	56.6	61.1
Mundingburra	10	405	1,341	142	8,041	7,103	6,276	21,420	64.0	58.5	50.0	57.5
North Ward-Castle Hill	6	154	477	35	3,038	2,907	2,653	8,598	63.6	62.9	55.6	60.7
Rosslea	17	654	1,991	306	13,067	11,102	10,590	34,759	64.5	56.6	52.2	57.8
Balance	44	1,953	5,917	1,367	38,740	35,860	31,968	106,568	64.0	61.2	52.8	59.3
<i>Total</i>												
Balance	8	128	333	87	1,744	1,664	1,486	4,894	44.0	43.3	37.4	41.6
<i>Northern (SD)</i>	<i>77</i>	<i>2,537</i>	<i>7,659</i>	<i>1,627</i>	<i>47,442</i>	<i>44,178</i>	<i>39,132</i>	<i>130,752</i>	<i>60.3</i>	<i>58.0</i>	<i>49.8</i>	<i>56.0</i>
Atherton (S)	7	97	312	35	1,231	1,183	1,282	3,696	40.9	40.7	42.6	41.4
Cairns (C) — Parts A and B (d)	21	2,827	8,178	2,186	67,641	68,221	59,935	195,797	77.2	80.4	68.4	75.3
Licensed hotels	51	2,863	9,161	1,102	67,653	64,592	56,904	189,149	76.2	75.2	64.1	71.8
Motels and guest houses	72	5,690	17,339	3,288	135,294	132,813	116,839	384,946	76.7	77.8	66.2	73.5
<i>Total</i>												
Cardwell (S)	9	376	1,221	286	6,599	5,879	5,789	18,267	56.6	52.1	49.7	52.8
Douglas (S)	19	1,354	4,340	1,103	27,953	22,876	18,150	68,979	66.6	56.3	43.2	55.4
Eacham (S)	6	108	300	32	1,241	1,209	1,217	3,667	37.1	37.3	36.4	36.9
Herberton (S)	3	27	82	17	271	309	258	838	32.4	38.1	30.8	33.7
Johnstone (S)	12	272	804	86	4,806	4,546	3,507	12,859	57.0	55.7	41.6	51.4
Mareeba (S)	9	159	499	79	2,009	1,887	1,786	5,682	40.8	39.6	36.2	38.8
Torres (S)	4	94	294	61	2,012	1,822	1,527	5,361	69.0	64.6	52.4	62.0
Balance	9	228	670	150	3,777	3,407	2,223	9,407	53.4	49.8	31.5	44.8
<i>Far North (SD)</i>	<i>150</i>	<i>8,405</i>	<i>25,861</i>	<i>5,137</i>	<i>185,193</i>	<i>175,931</i>	<i>152,578</i>	<i>513,702</i>	<i>71.1</i>	<i>69.8</i>	<i>58.6</i>	<i>66.4</i>
Carpentaria (S)	4	66	185	31	900	709	425	2,034	44.0	35.8	20.8	33.5
Cloncurry (S)	4	72	238	20	1,856	1,948	1,487	5,291	83.2	90.2	66.6	79.9
Flinders (S)	4	57	163	26	785	831	680	2,296	44.4	48.6	38.5	43.8
Mount Isa (C)	15	393	999	195	7,061	6,800	5,397	19,258	58.0	57.7	44.3	53.3
Balance	6	60	179	35	914	822	663	2,399	49.1	45.7	35.6	43.5
<i>North-West (SD)</i>	<i>33</i>	<i>648</i>	<i>1,764</i>	<i>307</i>	<i>11,516</i>	<i>11,110</i>	<i>8,652</i>	<i>31,278</i>	<i>57.3</i>	<i>57.2</i>	<i>43.1</i>	<i>52.5</i>
<i>Queensland</i>	<i>1,113</i>	<i>42,161</i>	<i>129,138</i>	<i>33,406</i>	<i>862,301</i>	<i>820,960</i>	<i>765,256</i>	<i>2,448,517</i>	<i>66.1</i>	<i>65.1</i>	<i>58.6</i>	<i>63.2</i>
Beaudesert (S) (e)	12	401	1,317	414	7,421	6,197	5,891	19,509	59.7	51.5	47.4	52.9
Caboolture (S) (e)	8	129	401	185	2,032	1,745	2,252	6,029	50.8	45.1	56.3	50.8
Gold Coast City	21	4,739	15,354	6,847	110,408	121,452	118,475	350,335	75.2	85.4	80.6	80.4
Licensed hotels	91	3,050	9,530	1,138	60,882	56,801	61,603	179,286	64.4	62.1	65.2	63.9
Motels and guest houses	112	7,789	24,884	7,985	171,290	178,253	180,078	529,621	70.9	76.3	74.6	73.9
<i>Total</i>												
Great Barrier Reef islands (g)	20	2,681	8,700	2,805	61,388	53,461	54,421	169,270	73.9	66.5	65.5	68.6
Ipswich (C) — Parts A and B (e)	7	146	457	66	2,177	1,979	2,383	6,539	48.1	45.2	52.7	48.7
Sunshine Coast	13	1,108	3,056	1,878	22,604	20,281	22,687	65,572	65.8	61.0	66.1	64.3
Licensed hotels	58	1,245	3,933	478	24,063	19,882	21,432	65,377	62.3	53.2	55.5	57.1
Motels and guest houses	71	2,353	6,989	2,356	46,667	40,163	44,119	130,949	64.0	56.9	60.5	60.5
<i>Total</i>												

(a) Brisbane City Core comprises the suburbs of Bowen Hills, City, Dutton Park, Fortitude Valley, Herston, Highgate Hill, Kangaroo Point, Kelvin Grove, Milton, New Farm, Newstead, Paddington, Red Hill, South Brisbane, Spring Hill, West End and Woollongabba. (b) Brisbane SD data from September quarter 1995 include 5 establishments previously included in Moreton SD data. (c) Only selected Statistical Local Areas as shown are releasable. See also figures for total Gold Coast (C) later in table. (d) Including the previous Mulgrave Shire.

SELECTED SUBDIVISIONS AND STATISTICAL LOCAL AREAS, QUEENSLAND, DECEMBER QUARTER 1995—continued

Guest nights				Guest arrivals				Takings from accommodation (\$'000)			
Oct.	Nov.	Dec.	Dec. qtr	Oct.	Nov.	Dec.	Dec. qtr	Oct.	Nov.	Dec.	Dec. qtr
4,971	4,497	4,046	13,514	3,091	2,912	2,714	8,717	171	182	150	503
886	557	671	2,114	566	450	424	1,440	35	22	22	80
9,139	9,170	10,830	29,139	3,176	2,879	3,509	9,564	576	610	684	1,871
2,347	2,269	1,784	6,400	1,268	1,176	787	3,231	95	90	63	249
7,516	7,485	5,871	20,872	4,937	4,714	3,906	13,557	314	309	224	847
13,256	11,633	9,826	34,715	7,809	6,963	5,917	20,689	518	479	370	1,367
25,288	21,668	28,206	75,162	6,999	6,588	7,089	20,676	1,342	1,114	1,490	3,945
36,621	32,683	34,042	103,346	23,191	20,602	23,750	67,543	1,309	1,183	1,094	3,585
571	555	391	1,517	520	485	344	1,349	22	20	16	58
100,595	90,517	95,667	286,779	51,557	46,769	48,440	146,766	4,383	4,009	4,114	12,505
1,021	998	697	2,716	927	795	628	2,350	30	30	21	81
5,224	2,895	3,035	11,154	3,231	1,912	2,178	7,321	185	104	91	380
2,571	2,394	2,360	7,125	1,720	1,241	1,508	4,469	72	62	58	193
8,816	6,087	6,092	20,995	5,878	3,948	4,314	14,140	287	197	170	654
2,521	2,347	1,649	6,517	1,564	1,415	971	3,950	98	110	70	277
52,484	43,731	53,129	149,344	22,605	18,340	24,138	65,083	2,082	1,782	1,878	5,742
3,444	3,203	3,930	10,577	2,001	1,592	2,439	6,032	91	89	96	276
107,328	100,257	101,260	308,845	29,560	28,913	29,086	87,559	5,922	5,045	5,240	16,207
2,146	1,885	1,735	5,766	1,368	1,072	1,084	3,524	73	72	52	197
167,923	151,423	161,703	481,049	57,098	51,332	57,718	166,148	8,266	7,097	7,336	22,700
4,137	3,303	4,146	11,586	2,540	2,084	2,429	7,053	128	107	102	337
2,562	2,462	2,772	7,796	1,846	1,766	2,086	5,698	87	83	79	248
3,929	4,118	3,290	11,337	2,416	2,466	2,064	6,946	119	125	92	336
15,535	15,647	12,737	43,919	10,461	9,996	8,408	28,865	1,076	1,080	957	3,113
5,686	5,464	5,805	16,955	3,136	3,310	3,194	9,640	180	164	164	509
11,654	10,337	9,780	31,771	5,694	5,016	4,831	15,541	515	444	417	1,376
5,444	5,111	5,361	15,916	3,491	2,952	3,327	9,770	150	143	137	430
21,386	17,965	19,526	58,877	9,246	8,344	8,991	26,581	803	670	645	2,118
59,705	54,524	53,209	167,438	32,028	29,618	28,751	90,397	2,724	2,501	2,320	7,545
2,783	2,676	2,424	7,883	1,450	1,277	1,232	3,959	348	359	248	955
73,116	67,083	65,841	206,040	40,280	37,211	36,562	114,053	3,406	3,175	2,840	9,421
2,049	1,907	2,481	6,437	1,562	1,390	1,780	4,732	52	48	59	159
118,900	117,276	109,471	345,647	36,825	37,471	37,224	111,520	8,312	8,408	7,468	24,188
122,069	114,405	107,422	343,896	40,176	37,653	36,497	114,326	5,101	4,792	4,311	14,204
240,969	231,681	216,893	689,543	77,001	75,124	73,721	225,846	13,413	13,200	11,778	38,392
13,947	11,470	13,275	38,692	4,718	4,399	5,143	14,260	1,344	1,126	1,052	3,523
57,844	46,151	38,932	142,927	16,573	14,574	10,088	41,235	5,314	4,739	4,059	14,112
2,118	2,091	2,431	6,640	1,358	1,110	1,324	3,792	63	57	57	178
461	398	376	1,235	301	241	267	809	9	8	9	26
7,903	7,104	6,835	21,842	3,324	3,525	3,129	9,978	256	248	216	720
3,567	3,093	3,233	9,893	1,974	1,681	1,804	5,459	118	102	120	340
3,282	2,929	2,602	8,813	820	750	617	2,187	440	405	358	1,202
6,163	5,577	3,934	15,674	2,957	2,400	1,724	7,081	702	727	441	1,869
338,303	312,401	290,992	941,696	110,588	105,194	99,597	315,379	21,713	20,659	18,148	60,520
1,189	817	474	2,480	807	588	312	1,707	44	33	19	96
2,814	2,980	2,394	8,188	1,795	1,521	1,415	4,731	88	91	71	251
1,113	1,155	1,043	3,311	862	834	709	2,405	33	33	30	96
9,293	9,084	8,340	26,717	4,292	4,036	4,333	12,661	419	407	324	1,150
1,353	1,175	998	3,526	906	779	626	2,311	44	42	30	116
15,762	15,211	13,249	44,222	8,662	7,758	7,395	23,815	629	607	474	1,711
1,554,015	1,440,568	1,498,043	4,492,626	646,886	608,350	625,691	1,880,927	82,798	79,858	76,385	239,041
14,755	11,333	12,889	38,977	8,309	6,019	7,247	21,575	705	605	564	1,874
3,466	2,892	4,030	10,388	2,553	2,215	2,708	7,476	114	99	124	337
214,998	231,540	245,984	692,522	66,061	72,740	72,299	211,100	14,412	15,998	15,957	46,367
125,358	115,724	142,015	383,097	47,413	46,551	50,556	144,520	4,046	3,810	4,633	12,490
340,356	347,264	387,999	1,075,619	113,474	119,291	122,855	355,620	18,459	19,808	20,590	58,857
128,437	114,709	117,773	360,919	29,452	27,559	27,323	84,334	9,474	8,289	8,400	26,163
3,884	3,487	4,730	12,101	1,730	1,547	2,092	5,369	147	139	164	450
49,795	40,597	51,684	142,076	14,245	13,644	15,092	42,981	3,463	2,880	3,531	9,873
55,711	44,844	52,649	153,204	22,425	19,051	21,667	63,143	1,644	1,425	1,754	4,824
105,506	85,441	104,333	295,280	36,670	32,695	36,759	106,124	5,107	4,305	5,285	14,697

(e) Beaudesert and Caboolture Shires and Gold Coast and Ipswich Cities straddle the boundary line between Brisbane and Moreton Statistical Divisions. (f) Including the previous Albert Shire. (g) Great Barrier Reef islands establishments are those on coastal islands from Lady Elliot in the south to Lizard in the north. (h) Sunshine Coast Statistical District comprises the more urban coastal portions of Caloundra City and Maroochy and Noosa Shires.

TABLE 8 — HOLIDAY FLATS, UNITS AND HOUSES BY STATISTICAL DIVISION, QUEENSLAND

Particulars	Brisbane (SD) (a)			Moreton (SD) and Darling Downs (SD) (a)			Wide Bay-Burnett (SD)			Fitzroy (SD)
	Real estate agents	Other letting entities	Total	Real estate agents	Other letting entities	Total	Real estate agents	Other letting entities	Total	Total
LETTING ENTITIES, CAPACITY AND EMPLOYMENT										
<i>December quarter 1994—</i>										
Letting entities	6	27	33	61	371	432	16	28	44	11
Flats, units and houses										
Single bedroom	15	233	248	166	2,077	2,243	27	37	64	55
Multiple bedroom	267	310	577	3,790	8,126	11,916	437	268	705	44
<i>Total flats, units and houses</i>	<i>282</i>	<i>543</i>	<i>825</i>	<i>3,956</i>	<i>10,203</i>	<i>14,159</i>	<i>464</i>	<i>305</i>	<i>769</i>	<i>99</i>
Bed spaces	1,473	2,041	3,514	17,177	40,284	57,461	2,213	1,298	3,511	389
Employment (persons) (b)	—	109	109	—	1,717	1,717	—	102	102	26
<i>December quarter 1995—</i>										
Letting entities	12	29	41	53	404	457	16	32	48	12
Flats, units and houses										
Single bedroom	16	294	310	208	2,091	2,299	26	54	80	57
Multiple bedroom	508	335	843	3,421	8,807	12,228	428	325	753	52
<i>Total flats, units and houses</i>	<i>524</i>	<i>629</i>	<i>1,153</i>	<i>3,629</i>	<i>10,898</i>	<i>14,527</i>	<i>454</i>	<i>379</i>	<i>833</i>	<i>109</i>
Bed spaces	2,726	2,254	4,980	15,886	43,159	59,045	2,173	1,711	3,884	426
Employment (persons) (b)	—	124	124	—	1,908	1,908	—	104	104	25
UNIT NIGHTS OCCUPIED										
<i>December quarter 1994</i>	<i>14,868</i>	<i>32,161</i>	<i>47,029</i>	<i>190,213</i>	<i>612,894</i>	<i>803,107</i>	<i>13,645</i>	<i>14,303</i>	<i>27,948</i>	<i>4,672</i>
<i>1995—</i>										
October	8,799	13,491	22,290	57,731	240,994	298,725	3,844	7,074	10,918	1,824
November	7,687	12,056	19,743	53,292	203,152	256,444	3,113	5,427	8,540	1,551
December	11,120	12,328	23,448	72,580	228,548	301,128	5,808	6,542	12,350	1,880
<i>December quarter 1995</i>	<i>27,606</i>	<i>37,875</i>	<i>65,481</i>	<i>183,603</i>	<i>672,694</i>	<i>856,297</i>	<i>12,765</i>	<i>19,043</i>	<i>31,808</i>	<i>5,255</i>
UNIT OCCUPANCY RATES (per cent)										
<i>December quarter 1994</i>	<i>57.3</i>	<i>64.4</i>	<i>62.0</i>	<i>52.4</i>	<i>65.4</i>	<i>61.7</i>	<i>32.0</i>	<i>51.0</i>	<i>39.5</i>	<i>51.3</i>
<i>1995—</i>										
October	54.2	69.2	62.4	51.3	71.5	66.4	27.3	60.2	42.3	54.0
November	48.9	63.9	57.1	49.0	62.4	59.0	22.9	47.7	34.2	47.4
December	68.5	63.2	65.6	64.5	67.7	66.9	41.3	55.7	47.8	55.6
<i>December quarter 1995</i>	<i>57.3</i>	<i>65.5</i>	<i>61.7</i>	<i>55.0</i>	<i>67.2</i>	<i>64.2</i>	<i>30.6</i>	<i>54.6</i>	<i>41.5</i>	<i>52.4</i>
UNIT LETTINGS										
<i>December quarter 1994</i>	<i>1,943</i>	<i>6,394</i>	<i>8,337</i>	<i>18,980</i>	<i>108,159</i>	<i>127,139</i>	<i>1,772</i>	<i>4,151</i>	<i>5,923</i>	<i>1,803</i>
<i>1995—</i>										
October	1,233	2,520	3,753	5,394	42,157	47,551	537	1,993	2,530	730
November	1,158	2,348	3,506	5,152	37,898	43,050	435	1,526	1,961	602
December	1,677	2,386	4,063	7,404	40,417	47,821	763	1,663	2,426	592
<i>December quarter 1995</i>	<i>4,068</i>	<i>7,254</i>	<i>11,322</i>	<i>17,950</i>	<i>120,472</i>	<i>138,422</i>	<i>1,735</i>	<i>5,182</i>	<i>6,917</i>	<i>1,924</i>
AVERAGE LENGTH OF STAY (days)										
<i>December quarter 1994</i>	<i>7.7</i>	<i>5.0</i>	<i>5.6</i>	<i>10.0</i>	<i>5.7</i>	<i>6.3</i>	<i>7.7</i>	<i>3.4</i>	<i>4.7</i>	<i>2.6</i>
<i>1995—</i>										
October	7.1	5.4	5.9	10.7	5.7	6.3	7.2	3.5	4.3	2.5
November	6.6	5.1	5.6	10.3	5.4	6.0	7.2	3.6	4.4	2.6
December	6.6	5.2	5.8	9.8	5.7	6.3	7.6	3.9	5.1	3.2
<i>December quarter 1995</i>	<i>6.8</i>	<i>5.2</i>	<i>5.8</i>	<i>10.2</i>	<i>5.6</i>	<i>6.2</i>	<i>7.4</i>	<i>3.7</i>	<i>4.6</i>	<i>2.7</i>
TAKINGS FROM ACCOMMODATION (\$'000)										
<i>December quarter 1994</i>	<i>346</i>	<i>2,351</i>	<i>2,697</i>	<i>8,164</i>	<i>43,613</i>	<i>51,777</i>	<i>536</i>	<i>924</i>	<i>1,460</i>	<i>220</i>
<i>1995—</i>										
October	213	1,055	1,268	2,419	16,288	18,708	120	458	579	98
November	189	970	1,159	1,985	13,459	15,444	105	335	440	77
December	363	912	1,275	4,039	19,567	23,606	279	459	739	95
<i>December quarter 1995</i>	<i>764</i>	<i>2,937</i>	<i>3,701</i>	<i>8,444</i>	<i>49,314</i>	<i>57,758</i>	<i>505</i>	<i>1,252</i>	<i>1,757</i>	<i>270</i>

TABLE 8—HOLIDAY FLATS, UNITS AND HOUSES BY STATISTICAL DIVISION, QUEENSLAND—continued

Particulars	Mackay (SD)	Northern (SD)		Far North (SD)	Balance of State	Queensland			
	Total	Real estate agents	Other letting entities	Total	Total	Total	Real estate agents	Other letting entities	Total
LETTING ENTITIES, CAPACITY AND EMPLOYMENT									
<i>December quarter 1994—</i>									
Letting entities	18	4	25	29	79	5	91	560	651
Flats, units and houses									
Single bedroom	88	4	124	128	687	48	224	3,337	3,561
Multiple bedroom	102	58	113	171	945	9	4,680	9,789	14,469
<i>Total flats, units and houses</i>	<i>190</i>	<i>62</i>	<i>237</i>	<i>299</i>	<i>1,632</i>	<i>57</i>	<i>4,904</i>	<i>13,126</i>	<i>18,030</i>
Bed spaces	841	313	1,029	1,342	6,225	227	21,757	51,753	73,510
Employment (persons) (b)	55	—	63	63	347	16	—	2,435	2,435
<i>December quarter 1995—</i>									
Letting entities	18	4	26	30	80	3	89	600	689
Flats, units and houses									
Single bedroom	74	3	135	138	732	22	298	3,414	3,712
Multiple bedroom	123	56	128	184	880	9	4,507	10,565	15,072
<i>Total flats, units and houses</i>	<i>197</i>	<i>59</i>	<i>263</i>	<i>322</i>	<i>1,612</i>	<i>31</i>	<i>4,805</i>	<i>13,979</i>	<i>18,784</i>
Bed spaces	850	324	1,121	1,445	6,077	130	21,687	55,150	76,837
Employment (persons) (b)	58	—	67	67	277	12	—	2,575	2,575
UNIT NIGHTS OCCUPIED									
<i>December quarter 1994</i>	<i>10,024</i>	<i>879</i>	<i>11,230</i>	<i>12,109</i>	<i>77,949</i>	<i>2,290</i>	<i>222,115</i>	<i>763,013</i>	<i>985,128</i>
<i>1995—</i>									
October	3,470	327	4,640	4,967	32,972	688	72,926	302,928	375,854
November	2,723	151	3,645	3,796	24,123	665	66,059	251,526	317,585
December	3,242	484	4,608	5,092	23,448	744	92,234	279,098	371,332
<i>December quarter 1995</i>	<i>9,435</i>	<i>962</i>	<i>12,893</i>	<i>13,855</i>	<i>80,543</i>	<i>2,097</i>	<i>231,219</i>	<i>833,552</i>	<i>1,064,771</i>
UNIT OCCUPANCY RATES (per cent)									
<i>December quarter 1994</i>	<i>57.3</i>	<i>15.4</i>	<i>51.5</i>	<i>44.0</i>	<i>51.9</i>	<i>43.7</i>	<i>49.3</i>	<i>63.2</i>	<i>59.5</i>
<i>1995—</i>									
October	56.8	17.9	56.9	49.8	66.3	71.6	49.0	70.1	64.7
November	46.1	8.5	46.2	39.3	50.1	71.5	45.8	60.2	56.5
December	53.1	26.5	56.5	51.0	47.0	77.4	61.9	64.4	63.8
<i>December quarter 1995</i>	<i>52.1</i>	<i>17.7</i>	<i>53.3</i>	<i>46.8</i>	<i>54.5</i>	<i>73.5</i>	<i>52.3</i>	<i>64.9</i>	<i>61.7</i>
UNIT LETTINGS									
<i>December quarter 1994</i>	<i>2,685</i>	<i>149</i>	<i>2,948</i>	<i>3,097</i>	<i>17,148</i>	<i>1,148</i>	<i>23,123</i>	<i>144,157</i>	<i>167,280</i>
<i>1995—</i>									
October	975	54	1,099	1,153	6,301	301	7,529	55,765	63,294
November	861	29	803	832	4,618	215	7,036	48,609	55,645
December	978	73	982	1,055	4,931	282	10,244	51,904	62,148
<i>December quarter 1995</i>	<i>2,814</i>	<i>156</i>	<i>2,884</i>	<i>3,040</i>	<i>15,850</i>	<i>798</i>	<i>24,809</i>	<i>156,278</i>	<i>181,087</i>
AVERAGE LENGTH OF STAY (days)									
<i>December quarter 1994</i>	<i>3.7</i>	<i>5.9</i>	<i>3.8</i>	<i>3.9</i>	<i>4.5</i>	<i>2.0</i>	<i>9.6</i>	<i>5.3</i>	<i>5.9</i>
<i>1995—</i>									
October	3.6	6.1	4.2	4.3	5.2	2.3	9.7	5.4	5.9
November	3.2	5.2	4.5	4.6	5.2	3.1	9.4	5.2	5.7
December	3.3	6.6	4.7	4.8	4.8	2.6	9.0	5.4	6.0
<i>December quarter 1995</i>	<i>3.4</i>	<i>6.2</i>	<i>4.5</i>	<i>4.6</i>	<i>5.1</i>	<i>2.6</i>	<i>9.3</i>	<i>5.3</i>	<i>5.9</i>
TAKINGS FROM ACCOMMODATION (\$'000)									
<i>December quarter 1994</i>	<i>580</i>	<i>41</i>	<i>590</i>	<i>630</i>	<i>7,562</i>	<i>95</i>	<i>9,230</i>	<i>55,790</i>	<i>63,020</i>
<i>1995—</i>									
October	192	14	285	299	2,528	20	2,903	20,789	23,691
November	141	7	208	215	1,765	18	2,400	16,858	19,258
December	193	22	262	284	1,711	21	4,850	23,074	27,924
<i>December quarter 1995</i>	<i>525</i>	<i>43</i>	<i>755</i>	<i>799</i>	<i>6,004</i>	<i>59</i>	<i>10,152</i>	<i>60,720</i>	<i>70,873</i>

(a) Brisbane SD data from September quarter 1995 include 7 letting entities previously included in Moreton SD data. (b) Employment numbers exclude real estate agents and their employees.

TABLE 9 — HOLIDAY FLATS, UNITS AND HOUSES: STATISTICAL DIVISIONS AND SELECTED

Statistical Divisions and Selected Subdivisions and Statistical Local Areas	Flats, units and houses				Bed spaces	Employment (persons) (a)	Unit nights occupied			
	Letting entities	Single bedroom	Multiple bedroom	Total			Oct.	Nov.	Dec.	Dec. qtr
Brisbane City (SSD)										
Brisbane City Core (b)	7	73	110	183	673	30	4,944	4,505	3,961	13,410
Toowong	7	67	70	137	513	29	3,168	2,775	2,736	8,679
Balance	9	114	75	189	563	42	3,267	2,804	3,004	9,075
Total	23	254	255	509	1,749	101	11,379	10,084	9,701	31,164
Caboolture (S) — Part A (c) (d)	8	2	264	266	1,294	6	4,488	3,795	5,111	13,394
Redland (S) Balance (e)	7	52	276	328	1,690	14	5,641	4,995	7,874	18,510
Balance	3	2	48	50	247	3	782	869	762	2,413
Brisbane (SD) (c)	41	310	843	1,153	4,980	124	22,290	19,743	23,448	65,481
Gold Coast (C) — Part B (SSD) (f)										
Biggera Waters	5	—	134	134	551	18	3,187	2,747	3,087	9,021
Broadbeach	27	190	623	813	2,960	125	17,848	15,014	15,634	48,496
Burleigh Heads	26	122	810	932	3,610	114	19,895	15,971	20,173	56,039
Coolangatta	27	118	901	1,019	4,022	106	22,078	19,721	23,189	64,988
Currumbin	5	7	180	187	841	19	3,455	2,506	3,619	9,580
Labrador	7	19	77	96	383	18	1,680	1,203	1,534	4,417
Main Beach-Broadwater	13	10	242	252	1,073	45	4,814	3,465	4,009	12,288
Mermaid Beach	13	18	311	329	1,381	35	6,998	6,293	7,604	20,895
Miami	9	25	231	256	1,038	45	6,040	5,603	5,433	17,076
Palm Beach	14	1	369	370	1,532	37	6,756	5,415	7,666	19,837
Surfers Paradise	110	1,350	2,540	3,890	13,666	607	87,262	73,258	80,777	241,297
Tugun	7	8	220	228	966	17	4,231	3,733	5,483	13,447
Balance	10	29	186	215	963	56	4,040	3,734	3,862	11,636
Total	273	1,897	6,824	8,721	32,986	1,242	188,284	158,663	182,070	529,017
Sunshine Coast Statistical District (g)										
Caloundra (C) — Part A	33	50	1,222	1,272	6,008	84	22,185	21,242	28,423	71,850
Maroochy (S) — Part A	62	159	1,698	1,857	8,203	241	32,845	29,622	38,507	100,974
Noosa (S) — Part A	83	170	2,410	2,580	11,311	322	54,417	46,106	50,991	151,514
Total	178	379	5,330	5,709	25,522	647	109,447	96,970	117,921	324,338
Balance	6	23	74	97	537	19	994	811	1,137	2,942
Moreton and Darling Downs (SDs) (c)	457	2,299	12,228	14,527	59,045	1,908	298,725	256,444	301,128	856,297
Burnett (S) — Parts A and B	7	12	73	85	329	15	1,328	1,110	1,505	3,943
Cooloolta (S)	4	17	145	162	820	7	693	602	1,883	3,178
Hervey Bay (C)	34	46	517	563	2,624	75	8,474	6,567	8,532	23,573
Balance	3	5	18	23	111	7	423	261	430	1,114
Wide Bay-Burnett (SD)	48	80	753	833	3,884	104	10,918	8,540	12,350	31,808
Livingstone (S)	9	35	48	83	341	16	1,357	1,137	1,412	3,906
Balance	3	22	4	26	85	9	467	414	468	1,349
Fitzroy (SD)	12	57	52	109	426	25	1,824	1,551	1,880	5,255
Mackay (C) — Parts A and B	4	18	56	74	381	23	1,339	1,085	1,237	3,661
Whitsunday (S)	14	56	67	123	469	35	2,131	1,638	2,005	5,774
Mackay (SD)	18	74	123	197	850	58	3,470	2,723	3,242	9,435
Townsville (C)										
Magnetic Island	14	70	93	163	758	32	2,125	1,347	2,154	5,626
North Ward-Castle Hill	6	13	43	56	243	14	1,518	1,443	1,441	4,402
Balance	3	13	24	37	159	9	704	591	744	2,039
Total	23	96	160	256	1,160	55	4,347	3,381	4,339	12,067
Balance	7	42	24	66	285	12	620	415	753	1,788
Northern (SD)	30	138	184	322	1,445	67	4,967	3,796	5,092	13,855
Cairns (C) — Parts A and B (h)	49	600	529	1,129	4,100	180	24,108	18,301	17,688	60,097
Cardwell (S)	3	3	16	19	110	10	257	169	253	679
Douglas (S)	24	105	293	398	1,594	78	8,038	5,182	4,857	18,077
Balance	4	24	42	66	273	9	569	471	650	1,690
Far North (SD)	80	732	880	1,612	6,077	277	32,972	24,123	23,448	80,543
Balance of State	3	22	9	31	130	12	688	665	744	2,097
Queensland	689	3,712	15,072	18,784	76,837	2,575	375,854	317,585	371,332	1,064,771

(a) Employment numbers exclude real estate agents and their employees. (b) Brisbane City Core comprises the suburbs of Bowen Hills, City, Dutton Park, Fortitude Valley, Herston, Highgate Hill, Kangaroo Point, Kelvin Grove, Milton, New Farm, Newstead, Paddington, Red Hill, South Brisbane, Spring Hill, West End and Woolloongabba. (c) Brisbane SD data from September quarter 1995 include 7 letting entities previously included in Moreton SD data. (d) Beaudesert and Caboolture Shires and Gold Coast

SUBDIVISIONS AND STATISTICAL LOCAL AREAS, QUEENSLAND, DECEMBER QUARTER 1995

Unit occupancy rates (per cent)				Unit lettings				Average length of stay (days)	Takings from accommodation (\$'000)			
Oct.	Nov.	Dec.	Dec. qtr	Oct.	Nov.	Dec.	Dec. qtr	Dec. qtr	Oct.	Nov.	Dec.	Dec. qtr
87.1	82.1	69.8	79.7	464	502	452	1,418	9.5	445	418	378	1,241
74.6	67.5	64.4	68.9	540	471	541	1,552	5.6	245	242	199	685
55.8	49.5	51.3	52.2	885	785	782	2,452	3.7	210	178	183	570
72.1	66.0	61.5	66.5	1,889	1,758	1,775	5,422	5.7	900	837	759	2,496
54.4	47.6	62.0	54.7	529	471	687	1,687	7.9	120	96	188	404
55.5	50.8	77.4	61.3	1,248	1,181	1,463	3,892	4.8	220	196	300	716
50.5	57.9	49.2	52.5	87	96	138	321	7.5	29	29	27	85
62.4	57.1	65.6	61.7	3,753	3,506	4,063	11,322	5.8	1,268	1,159	1,275	3,701
76.7	68.3	74.3	73.2	478	431	554	1,463	6.2	225	157	247	629
70.8	61.6	62.0	64.8	3,230	2,858	2,818	8,906	5.4	1,316	1,134	1,643	4,093
68.9	57.1	69.8	65.4	2,513	2,254	2,698	7,465	7.5	1,071	894	1,521	3,486
69.9	64.5	73.4	69.3	2,713	2,476	2,754	7,943	8.2	1,175	1,035	1,432	3,641
59.6	44.7	62.4	55.7	613	458	617	1,688	5.7	195	144	370	708
56.5	41.8	51.5	50.0	356	266	344	966	4.6	93	61	127	281
61.6	45.8	51.3	53.0	739	545	658	1,942	6.3	335	249	421	1,005
68.6	63.8	74.6	69.0	864	790	903	2,557	8.2	296	243	359	897
76.1	73.0	68.5	72.5	865	893	820	2,578	6.6	322	285	329	936
58.9	48.8	66.8	58.3	1,064	929	1,222	3,215	6.2	364	289	550	1,204
72.4	62.8	67.0	67.4	14,323	12,808	13,608	40,739	5.9	6,067	5,041	6,798	17,905
59.9	54.6	77.6	64.1	527	476	606	1,609	8.4	204	173	372	749
65.5	62.5	57.9	61.9	798	760	782	2,340	5.0	317	298	348	964
69.8	60.8	67.3	66.0	29,083	25,944	28,384	83,411	6.3	11,980	10,002	14,516	36,498
56.3	55.7	72.1	61.4	2,975	2,973	4,245	10,193	7.0	843	706	1,556	3,106
57.1	53.6	66.9	59.3	5,267	4,992	5,741	16,000	6.3	1,688	1,386	2,715	5,789
68.3	59.7	63.8	64.0	9,820	8,833	9,112	27,765	5.5	4,127	3,301	4,738	12,166
61.9	56.8	66.6	61.9	18,062	16,798	19,098	53,958	6.0	6,658	5,393	9,010	21,061
33.1	27.9	37.8	33.0	406	308	339	1,053	2.8	70	50	80	200
66.4	59.0	66.9	64.2	47,551	43,050	47,821	138,422	6.2	18,708	15,444	23,606	57,758
50.4	43.5	57.1	50.4	291	257	330	878	4.5	79	55	90	223
13.8	12.4	37.5	21.3	184	187	288	659	4.8	23	25	102	150
48.6	38.9	48.9	45.5	1,955	1,441	1,727	5,123	4.6	465	351	532	1,348
59.3	37.8	60.3	52.6	100	76	81	257	4.3	12	9	16	37
42.3	34.2	47.8	41.5	2,530	1,961	2,426	6,917	4.6	579	440	739	1,757
52.7	45.7	54.9	51.2	505	431	398	1,334	2.9	73	57	72	202
57.9	53.1	58.1	56.4	225	171	194	590	2.3	25	20	23	68
54.0	47.4	55.6	52.4	730	602	592	1,924	2.7	98	77	95	270
58.4	48.9	53.9	53.8	271	257	282	810	4.5	73	57	79	209
55.9	44.4	52.6	51.0	704	604	696	2,004	2.9	119	84	114	317
56.8	46.1	53.1	52.1	975	861	978	2,814	3.4	192	141	193	525
42.1	27.5	42.6	37.5	541	420	539	1,500	3.8	124	84	120	327
87.4	85.9	83.0	85.4	232	140	161	533	8.3	82	68	68	218
61.4	53.2	64.9	59.9	146	122	149	417	4.9	61	43	63	167
54.8	44.0	54.7	51.2	919	682	849	2,450	4.9	266	195	251	712
30.3	21.0	36.8	29.4	234	150	206	590	3.0	33	20	33	86
49.8	39.3	51.0	46.8	1,153	832	1,055	3,040	4.6	299	215	284	799
68.9	54.0	50.5	57.9	4,423	3,418	3,542	11,383	5.3	1,719	1,251	1,243	4,214
43.6	29.6	43.0	38.8	107	62	81	250	2.7	23	14	27	64
66.3	44.2	39.7	50.1	1,642	1,029	1,149	3,820	4.7	747	463	393	1,603
27.8	23.8	31.8	27.8	129	109	159	397	4.3	39	36	47	123
66.3	50.1	47.0	54.5	6,301	4,618	4,931	15,850	5.1	2,528	1,765	1,711	6,004
71.6	71.5	77.4	73.5	301	215	282	798	2.6	20	18	21	59
64.7	56.5	63.8	61.7	63,294	55,645	62,148	181,087	5.9	23,691	19,258	27,924	70,873

and Ipswich Cities straddle the boundary line between Brisbane and Moreton SDs. (e) Redland (S) Balance comprises properties on North Stradbroke and Coochiemudlo Islands. (f) Including the previous Albert (S) - Part B. (g) Sunshine Coast Statistical District comprises the more urban coastal portions of Caloundra City and Maroochy and Noosa Shires. (h) Including the previous Mulgrave Shire.

TABLE 10 — CARAVAN PARKS BY STATISTICAL DIVISION, QUEENSLAND

Particulars	Brisbane (SD) (a)			Moreton (SD) (a)			Wide Bay-Burnett (SD)		
	Short-term	Long-term	Total	Short-term	Long-term	Total	Short-term	Long-term	Total
ESTABLISHMENTS, CAPACITY AND EMPLOYMENT									
<i>December quarter 1994—</i>									
Establishments	9	67	76	35	73	108	37	58	95
Capacity									
On-site vans	54	1,326	1,380	104	978	1,082	192	488	680
Other powered sites	275	5,175	5,450	3,052	4,995	8,047	2,204	2,603	4,807
Unpowered sites	919	331	1,250	2,190	870	3,060	1,160	904	2,064
Cabins, flats, etc.	31	593	624	218	559	777	198	236	434
<i>Total capacity</i>	<i>1,279</i>	<i>7,425</i>	<i>8,704</i>	<i>5,564</i>	<i>7,402</i>	<i>12,966</i>	<i>3,754</i>	<i>4,231</i>	<i>7,985</i>
Sites occupied by long-term guests	94	4,964	5,058	474	3,816	4,290	347	1,292	1,639
Other sites permanently reserved	198	45	243	229	267	496	145	60	205
Employment (persons)	25	297	322	199	307	506	127	186	313
<i>December quarter 1995—</i>									
Establishments	13	72	85	31	65	96	35	62	97
Capacity									
On-site vans	77	1,428	1,505	82	927	1,009	157	492	649
Other powered sites	733	5,440	6,173	2,776	4,366	7,142	2,029	2,878	4,907
Unpowered sites	766	320	1,086	2,161	847	3,008	1,269	1,008	2,277
Cabins, flats, etc.	72	654	726	155	546	701	165	309	474
<i>Total capacity</i>	<i>1,648</i>	<i>7,842</i>	<i>9,490</i>	<i>5,174</i>	<i>6,686</i>	<i>11,860</i>	<i>3,620</i>	<i>4,687</i>	<i>8,307</i>
Sites occupied by long-term guests	329	5,139	5,468	379	3,325	3,704	243	1,312	1,555
Other sites permanently reserved	296	133	429	148	202	350	132	71	203
Employment (persons)	52	315	367	196	287	483	116	204	320
SITE NIGHTS OCCUPIED									
<i>December quarter 1994</i>	<i>42,569</i>	<i>507,592</i>	<i>550,161</i>	<i>191,430</i>	<i>450,453</i>	<i>641,883</i>	<i>109,473</i>	<i>160,623</i>	<i>270,096</i>
<i>1995—</i>									
October	23,582	179,186	202,768	51,696	131,593	183,289	33,402	55,201	88,603
November	23,393	171,915	195,308	44,585	125,431	170,016	27,285	51,357	78,642
December	26,549	178,349	204,898	71,635	132,865	204,500	37,940	55,746	93,686
<i>December quarter 1995</i>	<i>73,524</i>	<i>529,450</i>	<i>602,974</i>	<i>167,916</i>	<i>389,889</i>	<i>557,805</i>	<i>98,627</i>	<i>162,304</i>	<i>260,931</i>
SITE OCCUPANCY RATES (per cent)									
<i>December quarter 1994</i>	<i>36.2</i>	<i>74.3</i>	<i>68.7</i>	<i>37.6</i>	<i>66.1</i>	<i>54.0</i>	<i>31.7</i>	<i>41.3</i>	<i>36.8</i>
<i>1995—</i>									
October	46.2	73.7	68.9	32.2	63.5	49.9	29.8	38.0	34.4
November	47.3	73.1	68.6	28.7	62.5	47.8	25.1	36.5	31.6
December	52.0	73.4	69.6	44.7	64.1	55.6	33.8	38.4	36.4
<i>December quarter 1995</i>	<i>48.5</i>	<i>73.4</i>	<i>69.1</i>	<i>35.3</i>	<i>63.4</i>	<i>51.1</i>	<i>29.6</i>	<i>37.6</i>	<i>34.1</i>
TAKINGS FROM ACCOMMODATION (\$'000)									
<i>December quarter 1994</i>	<i>384</i>	<i>4,706</i>	<i>5,090</i>	<i>2,524</i>	<i>4,808</i>	<i>7,332</i>	<i>1,187</i>	<i>1,552</i>	<i>2,739</i>
<i>1995—</i>									
October	244	1,665	1,908	725	1,511	2,235	383	561	943
November	235	1,619	1,854	624	1,450	2,074	288	518	805
December	316	1,698	2,014	932	1,644	2,575	468	592	1,060
<i>December quarter 1995</i>	<i>794</i>	<i>4,982</i>	<i>5,776</i>	<i>2,280</i>	<i>4,604</i>	<i>6,885</i>	<i>1,138</i>	<i>1,670</i>	<i>2,808</i>

TABLE 10—CARAVAN PARKS BY STATISTICAL DIVISION, QUEENSLAND—*continued*

Particulars	Darling Downs (SD)			South-West (SD)			Fitzroy (SD)		
	Short-term	Long-term	Total	Short-term	Long-term	Total	Short-term	Long-term	Total
ESTABLISHMENTS, CAPACITY AND EMPLOYMENT									
<i>December quarter 1994—</i>									
Establishments	13	30	43	6	12	18	32	40	72
Capacity									
On-site vans	93	243	336	27	64	91	103	505	608
Other powered sites	365	856	1,221	103	267	370	1,047	1,996	3,043
Unpowered sites	434	392	826	173	81	254	596	404	1,000
Cabins, flats, etc.	75	70	145	2	20	22	141	255	396
<i>Total capacity</i>	<i>967</i>	<i>1,561</i>	<i>2,528</i>	<i>305</i>	<i>432</i>	<i>737</i>	<i>1,887</i>	<i>3,160</i>	<i>5,047</i>
Sites occupied by long-term guests	76	374	450	5	89	94	179	1,034	1,213
Other sites permanently reserved	1	7	8	1	1	2	39	38	77
Employment (persons)	29	63	92	11	19	30	115	146	261
<i>December quarter 1995—</i>									
Establishments	15	28	43	9	9	18	31	41	72
Capacity									
On-site vans	101	232	333	38	46	84	72	515	587
Other powered sites	414	818	1,232	163	189	352	1,138	1,923	3,061
Unpowered sites	439	301	740	198	63	261	603	326	929
Cabins, flats, etc.	81	69	150	9	20	29	195	223	418
<i>Total capacity</i>	<i>1,035</i>	<i>1,420</i>	<i>2,455</i>	<i>408</i>	<i>318</i>	<i>726</i>	<i>2,008</i>	<i>2,987</i>	<i>4,995</i>
Sites occupied by long-term guests	60	349	409	15	68	83	169	862	1,031
Other sites permanently reserved	1	9	10	3	3	6	38	56	94
Employment (persons)	40	60	100	18	20	38	103	133	236
SITE NIGHTS OCCUPIED									
<i>December quarter 1994</i>	<i>14,485</i>	<i>43,914</i>	<i>58,399</i>	<i>1,558</i>	<i>10,905</i>	<i>12,463</i>	<i>43,264</i>	<i>121,091</i>	<i>164,355</i>
<i>1995—</i>									
October	5,480	14,340	19,820	1,219	2,881	4,100	16,427	35,470	51,897
November	4,168	12,969	17,137	881	2,479	3,360	13,598	34,726	48,324
December	5,070	13,817	18,887	1,079	2,479	3,558	14,774	35,120	49,894
<i>December quarter 1995</i>	<i>14,718</i>	<i>41,126</i>	<i>55,844</i>	<i>3,179</i>	<i>7,839</i>	<i>11,018</i>	<i>44,799</i>	<i>105,316</i>	<i>150,115</i>
SITE OCCUPANCY RATES (per cent)									
<i>December quarter 1994</i>	<i>16.3</i>	<i>30.6</i>	<i>25.1</i>	<i>5.6</i>	<i>27.4</i>	<i>18.4</i>	<i>24.9</i>	<i>41.7</i>	<i>35.4</i>
<i>1995—</i>									
October	17.1	32.6	26.0	9.6	29.2	18.2	26.4	38.3	33.5
November	13.4	30.4	23.3	7.2	26.0	15.4	22.6	39.5	32.6
December	15.8	31.4	24.8	8.5	25.1	15.8	23.7	38.7	32.6
<i>December quarter 1995</i>	<i>15.5</i>	<i>31.5</i>	<i>24.7</i>	<i>8.5</i>	<i>26.8</i>	<i>16.5</i>	<i>24.3</i>	<i>38.8</i>	<i>32.9</i>
TAKINGS FROM ACCOMMODATION (\$'000)									
<i>December quarter 1994</i>	<i>183</i>	<i>373</i>	<i>556</i>	<i>22</i>	<i>97</i>	<i>119</i>	<i>500</i>	<i>1,223</i>	<i>1,723</i>
<i>1995—</i>									
October	79	119	198	21	28	49	211	337	549
November	52	106	158	12	23	35	176	329	505
December	71	123	193	15	22	37	207	334	542
<i>December quarter 1995</i>	<i>202</i>	<i>348</i>	<i>549</i>	<i>49</i>	<i>73</i>	<i>122</i>	<i>595</i>	<i>1,001</i>	<i>1,595</i>

TABLE 10—CARAVAN PARKS BY STATISTICAL DIVISION, QUEENSLAND—continued

Particulars	Central-West (SD)			Mackay (SD)			Northern (SD)		
	Short-term	Long-term	Total	Short-term	Long-term	Total	Short-term	Long-term	Total
ESTABLISHMENTS, CAPACITY AND EMPLOYMENT									
<i>December quarter 1994—</i>									
Establishments	10	—	10	18	29	47	13	30	43
Capacity									
On-site vans	48	—	48	118	263	381	107	234	341
Other powered sites	314	—	314	606	1,731	2,337	586	1,550	2,136
Unpowered sites	295	—	295	253	432	685	177	541	718
Cabins, flats, etc.	51	—	51	143	158	301	47	187	234
<i>Total capacity</i>	<i>708</i>	<i>—</i>	<i>708</i>	<i>1,120</i>	<i>2,584</i>	<i>3,704</i>	<i>917</i>	<i>2,512</i>	<i>3,429</i>
Sites occupied by long-term guests	16	—	16	53	709	762	87	804	891
Other sites permanently reserved	4	—	4	75	16	91	4	6	10
Employment (persons)	24	—	24	67	86	153	53	108	161
<i>December quarter 1995—</i>									
Establishments	10	—	10	18	29	47	14	29	43
Capacity									
On-site vans	48	—	48	103	287	390	116	205	321
Other powered sites	362	—	362	756	1,450	2,206	640	1,601	2,241
Unpowered sites	314	—	314	331	367	698	189	500	689
Cabins, flats, etc.	47	—	47	156	180	336	81	166	247
<i>Total capacity</i>	<i>771</i>	<i>—</i>	<i>771</i>	<i>1,346</i>	<i>2,284</i>	<i>3,630</i>	<i>1,026</i>	<i>2,472</i>	<i>3,498</i>
Sites occupied by long-term guests	13	—	13	77	662	739	125	691	816
Other sites permanently reserved	2	—	2	75	20	95	9	25	34
Employment (persons)	27	—	27	79	89	168	57	99	156
SITE NIGHTS OCCUPIED									
<i>December quarter 1994</i>	<i>5,978</i>	<i>—</i>	<i>5,978</i>	<i>32,539</i>	<i>85,062</i>	<i>117,601</i>	<i>30,797</i>	<i>102,336</i>	<i>133,133</i>
<i>1995—</i>									
October	2,244	—	2,244	14,697	27,421	42,118	14,742	33,165	47,907
November	1,161	—	1,161	11,677	25,758	37,435	10,992	30,461	41,453
December	1,008	—	1,008	12,899	25,985	38,884	11,899	28,011	39,910
<i>December quarter 1995</i>	<i>4,413</i>	<i>—</i>	<i>4,413</i>	<i>39,273</i>	<i>79,164</i>	<i>118,437</i>	<i>37,633</i>	<i>91,637</i>	<i>129,270</i>
SITE OCCUPANCY RATES (per cent)									
<i>December quarter 1994</i>	<i>9.2</i>	<i>—</i>	<i>9.2</i>	<i>31.6</i>	<i>35.8</i>	<i>34.5</i>	<i>36.5</i>	<i>44.3</i>	<i>42.2</i>
<i>1995—</i>									
October	9.4	—	9.4	35.2	38.7	37.4	46.3	43.3	44.2
November	5.0	—	5.0	28.9	37.6	34.4	35.7	41.1	39.5
December	4.2	—	4.2	30.9	36.7	34.6	37.4	36.6	36.8
<i>December quarter 1995</i>	<i>6.2</i>	<i>—</i>	<i>6.2</i>	<i>31.7</i>	<i>37.7</i>	<i>35.5</i>	<i>39.9</i>	<i>40.3</i>	<i>40.2</i>
TAKINGS FROM ACCOMMODATION (\$'000)									
<i>December quarter 1994</i>	<i>102</i>	<i>—</i>	<i>102</i>	<i>509</i>	<i>784</i>	<i>1,293</i>	<i>334</i>	<i>1,122</i>	<i>1,456</i>
<i>1995—</i>									
October	43	—	43	231	273	505	164	367	531
November	24	—	24	175	246	422	141	332	473
December	22	—	22	225	247	472	142	324	466
<i>December quarter 1995</i>	<i>89</i>	<i>—</i>	<i>89</i>	<i>631</i>	<i>767</i>	<i>1,399</i>	<i>446</i>	<i>1,023</i>	<i>1,469</i>

TABLE 10—CARAVAN PARKS BY STATISTICAL DIVISION, QUEENSLAND—continued

Particulars	Far North (SD)			North-West (SD)			Queensland		
	Short-term	Long-term	Total	Short-term	Long-term	Total	Short-term	Long-term	Total
ESTABLISHMENTS, CAPACITY AND EMPLOYMENT									
<i>December quarter 1994—</i>									
Establishments	48	45	93	17	9	26	238	393	631
Capacity									
On-site vans	173	535	708	39	68	107	1,058	4,704	5,762
Other powered sites	1,767	1,889	3,656	479	582	1,061	10,798	21,644	32,442
Unpowered sites	1,255	896	2,151	484	124	608	7,936	4,975	12,911
Cabins, flats, etc.	356	308	664	51	18	69	1,313	2,404	3,717
<i>Total capacity</i>	<i>3,551</i>	<i>3,628</i>	<i>7,179</i>	<i>1,053</i>	<i>792</i>	<i>1,845</i>	<i>21,105</i>	<i>33,727</i>	<i>54,832</i>
Sites occupied by long-term guests	368	993	1,361	45	307	352	1,744	14,382	16,126
Other sites permanently reserved	26	39	65	1	1	2	723	480	1,203
Employment (persons)	185	140	325	53	16	69	888	1,368	2,256
<i>December quarter 1995—</i>									
Establishments	49	44	93	17	10	27	242	389	631
Capacity									
On-site vans	195	538	733	28	78	106	1,017	4,748	5,765
Other powered sites	1,930	1,681	3,611	551	651	1,202	11,492	20,997	32,489
Unpowered sites	1,216	884	2,100	506	159	665	7,992	4,775	12,767
Cabins, flats, etc.	409	274	683	44	29	73	1,414	2,470	3,884
<i>Total capacity</i>	<i>3,750</i>	<i>3,377</i>	<i>7,127</i>	<i>1,129</i>	<i>917</i>	<i>2,046</i>	<i>21,915</i>	<i>32,990</i>	<i>54,905</i>
Sites occupied by long-term guests	374	937	1,311	29	311	340	1,813	13,656	15,469
Other sites permanently reserved	29	56	85	5	1	6	738	576	1,314
Employment (persons)	191	135	326	51	22	73	930	1,364	2,294
SITE NIGHTS OCCUPIED									
<i>December quarter 1994</i>	<i>94,704</i>	<i>132,234</i>	<i>226,938</i>	<i>9,383</i>	<i>32,376</i>	<i>41,759</i>	<i>576,180</i>	<i>1,646,586</i>	<i>2,222,766</i>
<i>1995—</i>									
October	38,145	41,765	79,910	3,051	12,633	15,684	204,685	533,655	738,340
November	27,825	38,682	66,507	2,284	12,683	14,967	167,849	506,461	674,310
December	26,684	39,106	65,790	2,160	10,677	12,837	211,697	522,155	733,852
<i>December quarter 1995</i>	<i>92,654</i>	<i>119,553</i>	<i>212,207</i>	<i>7,495</i>	<i>35,993</i>	<i>43,488</i>	<i>584,231</i>	<i>1,562,271</i>	<i>2,146,502</i>
SITE OCCUPANCY RATES (per cent)									
<i>December quarter 1994</i>	<i>29.0</i>	<i>39.6</i>	<i>34.4</i>	<i>9.7</i>	<i>44.4</i>	<i>24.6</i>	<i>29.7</i>	<i>53.1</i>	<i>44.1</i>
<i>1995—</i>									
October	32.8	39.9	36.2	8.7	44.4	24.7	30.1	52.2	43.4
November	24.7	38.2	31.1	6.7	46.1	24.4	25.5	51.3	41.0
December	23.0	37.4	29.8	6.2	37.6	20.2	31.2	51.1	43.2
<i>December quarter 1995</i>	<i>26.9</i>	<i>38.5</i>	<i>32.4</i>	<i>7.2</i>	<i>42.7</i>	<i>23.1</i>	<i>29.0</i>	<i>51.5</i>	<i>42.5</i>
TAKINGS FROM ACCOMMODATION (\$'000)									
<i>December quarter 1994</i>	<i>1,368</i>	<i>1,497</i>	<i>2,865</i>	<i>109</i>	<i>343</i>	<i>451</i>	<i>7,221</i>	<i>16,504</i>	<i>23,725</i>
<i>1995—</i>									
October	601	516	1,117	31	147	178	2,732	5,526	8,258
November	442	466	908	20	151	171	2,189	5,240	7,429
December	444	467	911	19	121	140	2,859	5,572	8,432
<i>December quarter 1995</i>	<i>1,486</i>	<i>1,450</i>	<i>2,936</i>	<i>70</i>	<i>420</i>	<i>490</i>	<i>7,781</i>	<i>16,337</i>	<i>24,118</i>

(a) Brisbane SD data from September quarter 1995 include 8 establishments previously included in Moreton SD data.

TABLE 11 — CARAVAN PARKS: STATISTICAL DIVISIONS AND SELECTED SUBDIVISIONS

Statistical Divisions and Selected Subdivisions and Statistical Local Areas	Capacity					Total	Sites occupied by long-term guests	Other sites permanently reserved	Employment (persons)
	Establishments	On-site vans	Other powered sites	Unpowered sites	Cabins, flats, etc.				
Brisbane City (SSD)									
Aspley	3	83	403	2	85	573	355	—	29
Eight Mile Plains	4	218	410	35	61	724	430	21	26
Balance	17	361	1,734	12	106	2,213	1,511	9	84
<i>Total</i>	<i>24</i>	<i>662</i>	<i>2,547</i>	<i>49</i>	<i>252</i>	<i>3,510</i>	<i>2,296</i>	<i>30</i>	<i>139</i>
Caloolture (S) — Part A (a) (b)	14	212	1,261	76	62	1,611	852	157	65
Gold Coast (C) — Part A (b) (c)	5	81	328	42	37	488	269	—	23
Logan City (SSD)	12	264	669	63	163	1,159	831	7	48
Redcliffe City (SSD)	10	62	325	32	25	444	247	4	31
Redland Shire (SSD)	12	71	493	803	48	1,415	331	228	29
Balance	8	153	550	21	139	863	642	3	32
<i>Brisbane (SD) (a)</i>	<i>85</i>	<i>1,505</i>	<i>6,173</i>	<i>1,086</i>	<i>726</i>	<i>9,490</i>	<i>5,468</i>	<i>429</i>	<i>367</i>
Caloundra (C) — Parts A and B	16	97	870	273	132	1,372	542	92	54
Esk (S)	4	28	136	135	8	307	39	8	7
Gold Coast (C) — Part B (b) (d)	27	431	3,381	508	214	4,534	2,022	118	162
Maroochy (S) — Parts A and B	24	224	1,805	494	175	2,698	718	113	114
Noosa (S) — Parts A and B	10	55	434	963	75	1,527	119	8	89
Balance	15	174	516	635	97	1,422	264	11	57
<i>Moreton (SD) (a)</i>	<i>96</i>	<i>1,009</i>	<i>7,142</i>	<i>3,008</i>	<i>701</i>	<i>11,860</i>	<i>3,704</i>	<i>350</i>	<i>483</i>
Bundaberg (C)	7	75	493	20	108	696	315	2	28
Burnett (S) — Parts A and B	10	53	702	529	28	1,312	221	8	34
Cooloola (S)	12	99	604	557	58	1,318	140	59	43
Hervey Bay (C)	25	167	1,789	318	125	2,399	565	42	91
Maryborough (C)	9	45	278	171	40	534	153	20	21
Miriam Vale (S)	6	18	218	83	30	349	30	45	25
Murgon (S)	3	8	81	110	23	222	5	3	5
Nanango (S)	5	57	186	44	11	298	23	4	9
Balance	20	127	556	445	51	1,179	103	20	64
<i>Wide Bay-Burnett (SD)</i>	<i>97</i>	<i>649</i>	<i>4,907</i>	<i>2,277</i>	<i>474</i>	<i>8,307</i>	<i>1,555</i>	<i>203</i>	<i>320</i>
Goondiwindi (T)	3	24	90	20	32	166	39	—	6
Inglewood (S)	5	18	105	25	8	156	13	—	7
Murilla (S)	4	21	89	35	6	151	18	—	7
Toowoomba (C)	5	60	259	40	29	388	165	—	29
Warwick (S)	5	50	121	166	30	367	25	2	11
Balance	21	160	568	454	45	1,227	149	8	40
<i>Darling Downs (SD)</i>	<i>43</i>	<i>333</i>	<i>1,232</i>	<i>740</i>	<i>150</i>	<i>2,455</i>	<i>409</i>	<i>10</i>	<i>100</i>
<i>South-West (SD)</i>	<i>18</i>	<i>84</i>	<i>352</i>	<i>261</i>	<i>29</i>	<i>726</i>	<i>83</i>	<i>6</i>	<i>38</i>
Banana (S)	9	97	266	110	41	514	68	1	27
Calliope (S) — Parts A and B	9	58	507	139	35	739	170	25	29
Emerald (S)	14	103	488	100	80	771	117	5	45
Gladstone (C)	7	81	262	21	40	404	201	—	22
Livingstone (S)	11	43	488	266	69	866	157	38	36
Rockhampton (C)	7	105	573	112	136	926	200	15	34
Balance	15	100	477	181	17	775	118	10	43
<i>Fitzroy (SD)</i>	<i>72</i>	<i>587</i>	<i>3,061</i>	<i>929</i>	<i>418</i>	<i>4,995</i>	<i>1,031</i>	<i>94</i>	<i>236</i>

AND STATISTICAL LOCAL AREAS, QUEENSLAND, DECEMBER QUARTER 1995

<i>Site nights occupied</i>				<i>Site occupancy rates (per cent)</i>				<i>Takings from accommodation (\$ '000)</i>			
<i>Oct.</i>	<i>Nov.</i>	<i>Dec.</i>	<i>Dec. qtr</i>	<i>Oct.</i>	<i>Nov.</i>	<i>Dec.</i>	<i>Dec. qtr</i>	<i>Oct.</i>	<i>Nov.</i>	<i>Dec.</i>	<i>Dec. qtr</i>
12,474	12,213	12,368	37,055	70.2	71.0	69.6	70.3	148	142	153	443
16,483	15,934	16,576	48,993	73.4	73.4	73.9	73.6	167	166	177	510
52,180	49,861	50,967	153,008	76.1	75.1	74.3	75.2	513	494	505	1,512
81,137	78,008	79,911	239,056	74.6	74.1	73.4	74.0	828	801	835	2,464
34,360	32,520	35,539	102,419	68.8	67.3	71.2	69.1	317	302	385	1,004
10,098	9,674	9,669	29,441	66.8	66.1	63.9	65.6	105	91	91	287
27,399	26,388	27,350	81,137	76.3	75.9	76.1	76.1	227	228	232	687
9,640	9,617	9,415	28,672	70.0	72.2	68.4	70.2	86	92	88	266
19,615	19,087	22,034	60,736	44.7	45.0	50.2	46.7	165	161	198	524
20,519	20,014	20,980	61,513	76.7	77.3	78.4	77.5	182	178	184	544
202,768	195,308	204,898	602,974	68.9	68.6	69.6	69.1	1,908	1,854	2,014	5,776
24,782	22,801	28,104	75,687	58.3	55.4	66.1	60.0	272	258	335	866
1,901	1,781	1,651	5,333	20.0	19.3	17.3	18.9	18	16	16	50
86,071	80,713	93,003	259,787	61.2	59.3	66.2	62.3	1,037	967	1,285	3,289
44,144	40,529	52,072	136,745	52.8	50.1	62.3	55.1	592	559	558	1,709
12,547	11,843	17,150	41,540	26.5	25.9	36.2	29.6	178	155	257	591
13,844	12,349	12,520	38,713	31.4	28.9	28.4	29.6	137	120	123	380
183,289	170,016	204,500	557,805	49.9	47.8	55.6	51.1	2,235	2,074	2,575	6,885
11,825	12,049	11,977	35,851	54.8	57.7	55.5	56.0	128	129	128	384
12,933	12,506	14,409	39,848	31.8	31.8	35.4	33.0	100	104	139	343
9,183	8,515	10,905	28,603	22.5	21.5	26.7	23.6	91	81	108	280
32,517	26,214	34,391	93,122	43.7	36.4	46.2	42.2	379	287	437	1,103
6,621	5,928	6,576	19,125	40.0	37.0	39.7	38.9	67	57	67	191
4,055	3,713	5,100	12,868	37.5	35.5	47.1	40.1	53	49	59	162
2,041	1,554	1,674	5,269	29.7	23.3	24.3	25.8	13	10	15	37
1,355	1,343	1,105	3,803	14.7	15.0	12.0	13.9	11	11	9	32
8,073	6,820	7,549	22,442	22.1	19.3	20.7	20.7	101	78	97	276
88,603	78,642	93,686	260,931	34.4	31.6	36.4	34.1	943	805	1,060	2,808
1,914	1,588	2,010	5,512	37.2	31.9	39.1	36.1	22	18	27	67
532	520	545	1,597	11.0	11.1	11.3	11.1	4	3	3	11
695	617	730	2,042	14.8	13.6	15.6	14.7	8	7	9	23
7,659	6,372	6,387	20,418	63.7	54.7	53.1	57.2	77	60	64	202
2,525	1,718	2,009	6,252	22.2	15.6	17.7	18.5	25	17	20	62
6,495	6,322	7,206	20,023	17.1	17.2	18.9	17.7	61	53	70	185
19,820	17,137	18,887	55,844	26.0	23.3	24.8	24.7	198	158	193	549
4,100	3,360	3,558	11,018	18	15	16	16	49	35	37	122
2,719	2,687	2,929	8,335	17.1	17.4	18.4	17.6	27	24	28	79
7,282	7,088	7,406	21,776	31.8	32.0	32.3	32.0	69	73	76	218
8,223	7,384	6,919	22,526	34.4	34.5	31.3	33.4	73	69	63	205
7,847	7,759	7,673	23,279	62.7	64.0	61.3	62.6	84	79	75	238
9,975	8,815	11,009	29,799	37.2	33.9	41.0	37.4	104	99	126	329
10,618	9,532	9,453	29,603	37.0	34.3	32.9	34.7	148	117	135	400
5,233	5,059	4,505	14,797	21.8	21.8	18.8	20.8	44	44	38	126
51,897	48,324	49,894	150,115	33.5	32.6	32.6	32.9	549	505	542	1,595

TABLE 11 — CARAVAN PARKS: STATISTICAL DIVISIONS AND SELECTED SUBDIVISIONS

Statistical Divisions and Selected Subdivisions and Statistical Local Areas	Capacity					Total	Sites occupied by long-term guests	Other sites permanently reserved	Employment (persons)
	Establishments	On-site vans	Other powered sites	Unpowered sites	Cabins, flats, etc.				
<i>Central-West (SD)</i>	10	48	362	314	47	771	13	2	27
Belyando (S)	4	14	251	20	37	322	140	7	9
Broadsound (S)	3	10	177	36	11	234	19	1	5
Mackay (C) — Parts A and B	16	174	909	222	148	1,453	362	8	68
Mirani (S)	4	16	109	47	3	175	35	4	7
Sarina (S)	7	55	189	59	26	329	84	3	17
Whitsunday (S)	13	121	571	314	111	1,117	99	72	62
<i>Mackay (SD)</i>	47	390	2,206	698	336	3,630	739	95	168
Bowen (S)	11	126	570	108	13	817	143	—	35
Burdekin (S)	7	27	255	137	33	452	75	1	15
Dalrymple (S)	5	11	112	44	31	198	3	—	11
Hinchinbrook (S)	5	20	257	80	20	377	37	11	21
Townsville (C)	10	120	738	206	93	1,157	393	21	55
Balance	5	17	309	114	57	497	165	1	19
<i>Northern (SD)</i>	43	321	2,241	689	247	3,498	816	34	156
Atherton (S)	5	49	218	149	33	449	95	17	12
Cairns (C) — Parts A and B (e)	23	312	1,389	383	316	2,400	731	7	105
Cardwell (S)	12	109	443	201	83	836	86	23	47
Douglas (S)	11	36	482	255	83	856	94	4	46
Eacham (S)	4	2	90	115	34	241	26	11	13
Herberton (S)	5	18	76	140	26	260	19	—	11
Johnstone (S)	13	98	433	293	49	873	135	18	41
Mareeba (S)	9	70	182	130	23	405	83	4	19
Balance	11	39	298	434	36	807	42	1	32
<i>Far North (SD)</i>	93	733	3,611	2,100	683	7,127	1,311	85	326
McKinlay (S)	5	8	96	190	8	302	10	—	15
Mount Isa (C)	10	64	583	144	34	825	281	1	28
Balance	12	34	523	331	31	919	49	5	30
<i>North-West (SD)</i>	27	106	1,202	665	73	2,046	340	6	73
<i>Queensland</i>									
Short-term parks	242	1,017	11,492	7,992	1,414	21,915	1,813	738	930
Long-term parks	389	4,748	20,997	4,775	2,470	32,990	13,656	576	1,364
Total	631	5,765	32,489	12,767	3,884	54,905	15,469	1,314	2,294
Beaudesert (S) (b)	5	20	167	128	61	376	148	—	33
Caboolture (S) (b)	14	212	1,261	76	62	1,611	852	157	65
Gold Coast (C) — Parts A and B (b) (f)	32	512	3,709	550	251	5,022	2,291	118	185
Ipswich (C) — Parts A and B (b)	7	187	359	4	133	683	434	3	33
Sunshine Coast Statistical District (g)	36	186	2,809	1,142	307	4,444	1,093	200	210

(a) Brisbane SD data from September quarter 1995 include 8 establishments previously included in Moreton SD data. (b) Beaudesert and Caboolture Shires and Gold Coast and Ipswich Cities straddle the boundary line between Brisbane and Moreton SDs. (c) Comprises the previous Albert (S) - Part A. (d) Including the previous Albert (S) - Part B. (e) Including the previous Mulgrave Shire. (f) Including the previous Albert Shire. (g) Sunshine Coast Statistical District comprises the more urban coastal portions of Caloundra City and Maroochy and Noosa Shires.

AND STATISTICAL LOCAL AREAS, QUEENSLAND, DECEMBER QUARTER 1995—continued

<i>Site nights occupied</i>				<i>Site occupancy rates (per cent)</i>				<i>Takings from accommodation (\$'000)</i>			
<i>Oct.</i>	<i>Nov.</i>	<i>Dec.</i>	<i>Dec. qtr</i>	<i>Oct.</i>	<i>Nov.</i>	<i>Dec.</i>	<i>Dec. qtr</i>	<i>Oct.</i>	<i>Nov.</i>	<i>Dec.</i>	<i>Dec. qtr</i>
2,244	1,161	1,008	4,413	9.4	5.0	4.2	6.2	43	24	22	89
4,630	4,467	4,637	13,734	46.4	46.2	46.5	46.4	34	32	32	98
1,098	1,115	1,026	3,239	15.1	15.9	14.1	15.0	11	11	11	33
17,764	15,723	16,522	50,009	39.4	36.1	36.7	37.4	203	171	191	566
2,116	1,915	1,662	5,693	39.0	36.5	30.6	35.4	13	11	9	34
3,818	3,484	3,652	10,954	37.4	35.3	35.8	36.2	45	39	38	121
12,692	10,731	11,385	34,808	36.7	32.0	32.9	33.9	198	157	192	547
42,118	37,435	38,884	118,437	37.4	34.4	34.6	35.5	505	422	472	1,399
10,733	8,143	6,270	25,146	42.4	33.2	24.8	33.5	115	77	71	263
5,162	4,775	4,037	13,974	36.8	35.2	28.8	33.6	56	49	43	147
431	785	1,035	2,251	7.0	13.2	16.9	12.4	5	11	13	30
5,610	3,512	4,592	13,714	48.0	31.1	39.3	39.5	30	22	26	78
19,482	18,437	18,082	56,001	54.3	53.1	50.4	52.6	253	246	249	748
6,489	5,801	5,894	18,184	42.1	38.9	38.3	39.8	72	68	63	203
47,907	41,453	39,910	129,270	44.2	39.5	36.8	40.2	531	473	466	1,469
4,351	4,074	4,538	12,963	31.3	30.2	32.6	31.4	47	43	47	137
39,226	34,816	34,164	108,206	52.7	48.4	45.9	49.0	613	514	508	1,635
7,846	6,059	6,122	20,027	30.3	24.2	23.6	26.0	104	83	95	283
8,004	5,835	4,988	18,827	30.2	22.7	18.8	23.9	148	102	90	340
1,936	1,826	2,300	6,062	25.9	25.3	30.8	27.3	24	22	30	76
714	679	749	2,142	8.9	8.7	9.3	9.0	8	7	8	23
9,063	7,182	7,461	23,706	33.5	27.4	27.6	29.5	91	73	76	240
3,548	3,450	3,381	10,379	28.3	28.4	26.9	27.9	32	32	31	95
5,222	2,586	2,087	9,895	20.9	10.7	8.3	13.3	49	31	27	107
79,910	66,507	65,790	212,207	36.2	31.1	29.8	32.4	1,117	908	911	2,936
837	635	500	1,972	8.9	7.0	5.3	7.1	8	5	5	19
11,518	11,538	9,698	32,754	45.0	46.6	37.9	43.2	131	136	108	375
3,329	2,794	2,639	8,762	11.7	10.1	9.3	10.4	39	30	27	96
15,684	14,967	12,837	43,488	24.7	24.4	20.2	23.1	178	171	140	490
204,685	167,849	211,697	584,231	30.1	25.5	31.2	29.0	2,732	2,189	2,859	7,781
533,655	506,461	522,155	1,562,271	52.2	51.3	51.1	51.5	5,526	5,240	5,572	16,337
738,340	674,310	733,852	2,146,502	43.4	41.0	43.2	42.5	8,258	7,429	8,432	24,118
6,124	5,266	6,008	17,398	52.5	46.7	51.5	50.3	73	61	68	203
34,360	32,520	35,539	102,419	68.8	67.3	71.2	69.1	317	302	385	1,004
96,169	90,387	102,672	289,228	61.8	60.0	65.9	62.6	1,141	1,058	1,376	3,575
13,940	13,691	14,312	41,943	65.8	66.8	67.6	66.7	130	133	140	403
69,193	62,989	83,185	215,367	50.2	47.2	60.4	52.7	902	835	990	2,727

TABLE 12 — VISITOR HOSTELS BY STATISTICAL DIVISION, QUEENSLAND

<i>Particulars</i>	<i>Brisbane (SD)</i>	<i>Moreton (SD)</i>	<i>Wide Bay- Burnett (SD)</i>	<i>Mackay (SD)</i>	<i>Northern (SD)</i>	<i>Far North (SD)</i>	<i>Balance of State</i>	<i>Queensland</i>
ESTABLISHMENTS, CAPACITY AND EMPLOYMENT								
<i>December quarter 1994—</i>								
Establishments	16	15	10	12	18	38	9	118
Bed spaces	772	974	537	923	1,334	3,052	386	7,978
Employment (persons)	40	53	37	113	67	255	20	585
<i>December quarter 1995—</i>								
Establishments	19	15	12	11	16	37	11	121
Bed spaces	1,105	966	711	924	1,259	2,920	398	8,283
Employment (persons)	68	83	50	86	68	215	27	597
GUEST NIGHTS								
<i>December quarter 1994</i>	<i>36,479</i>	<i>49,875</i>	<i>30,552</i>	<i>46,708</i>	<i>46,552</i>	<i>131,990</i>	<i>10,524</i>	<i>352,680</i>
<i>1995—</i>								
October	19,687	14,811	12,498	14,195	18,856	47,712	4,076	131,835
November	18,770	15,762	14,126	14,146	18,530	44,797	3,948	130,079
December	17,533	18,702	13,300	15,728	15,166	42,865	4,639	127,933
<i>December quarter 1995</i>	<i>55,990</i>	<i>49,275</i>	<i>39,924</i>	<i>44,069</i>	<i>52,552</i>	<i>135,374</i>	<i>12,663</i>	<i>389,847</i>
BED OCCUPANCY RATES (per cent)								
<i>December quarter 1994</i>	<i>51.4</i>	<i>55.7</i>	<i>61.8</i>	<i>55.0</i>	<i>37.9</i>	<i>47.0</i>	<i>29.6</i>	<i>48.1</i>
<i>1995</i>								
October	57.5	49.5	56.7	49.6	48.3	52.7	33.0	51.3
November	56.6	54.4	66.2	51.0	49.1	51.1	33.1	52.3
December	52.6	62.5	60.3	54.9	38.9	47.4	37.6	50.0
<i>December quarter 1995</i>	<i>55.6</i>	<i>55.4</i>	<i>61.0</i>	<i>51.8</i>	<i>45.4</i>	<i>50.4</i>	<i>34.6</i>	<i>51.2</i>
GUEST ARRIVALS								
<i>December quarter 1994</i>	<i>11,157</i>	<i>18,085</i>	<i>9,184</i>	<i>17,007</i>	<i>16,008</i>	<i>48,468</i>	<i>7,020</i>	<i>126,929</i>
<i>1995—</i>								
October	6,201	5,496	3,616	7,162	6,284	17,777	2,227	48,763
November	5,896	6,168	4,207	6,654	6,526	17,247	2,286	48,984
December	6,448	6,577	4,495	7,434	5,856	16,389	2,809	50,008
<i>December quarter 1995</i>	<i>18,545</i>	<i>18,241</i>	<i>12,318</i>	<i>21,250</i>	<i>18,666</i>	<i>51,413</i>	<i>7,322</i>	<i>147,755</i>
AVERAGE LENGTH OF STAY (days)								
<i>December quarter 1994</i>	<i>3.3</i>	<i>2.8</i>	<i>3.3</i>	<i>2.7</i>	<i>2.9</i>	<i>2.7</i>	<i>1.5</i>	<i>2.8</i>
<i>1995—</i>								
October	3.2	2.7	3.5	2.0	3.0	2.7	1.8	2.7
November	3.2	2.6	3.4	2.1	2.8	2.6	1.7	2.7
December	2.7	2.8	3.0	2.1	2.6	2.6	1.7	2.6
<i>December quarter 1995</i>	<i>3.0</i>	<i>2.7</i>	<i>3.2</i>	<i>2.1</i>	<i>2.8</i>	<i>2.6</i>	<i>1.7</i>	<i>2.6</i>
TAKINGS FROM ACCOMMODATION (\$'000)								
<i>December quarter 1994</i>	<i>508</i>	<i>677</i>	<i>329</i>	<i>480</i>	<i>500</i>	<i>1,728</i>	<i>129</i>	<i>4,352</i>
<i>1995—</i>								
October	254	204	136	187	221	624	49	1,676
November	241	218	166	185	217	582	48	1,656
December	231	259	152	204	192	545	56	1,639
<i>December quarter 1995</i>	<i>725</i>	<i>681</i>	<i>454</i>	<i>576</i>	<i>630</i>	<i>1,750</i>	<i>154</i>	<i>4,971</i>

EXPLANATORY NOTES

INTRODUCTION

1 This publication contains data for Queensland from a quarterly survey of tourist accommodation establishments.

SCOPE

2 Tourist accommodation establishments currently included in the survey comprise two groups:

- Establishments which provide predominantly short-term accommodation (i.e. for periods of less than 2 months) to the general public. These include:
 - *Hotels, motels and guest houses, with facilities* being hotels licensed to operate a public bar and motels, private hotels and guest houses all of which provide a bath (or shower) and toilet in most guest rooms and have breakfast available for guests. NOTE: From December quarter 1993, hotel, motel and guest house establishments with fewer than five rooms have been formally excluded from the scope of this statistical collection.
 - *Holiday flats, units and houses* (excluding establishments predominantly operated on a time share basis) which are operated by owners, managers or real estate agents who have sole letting rights to at least five flats, units or houses for short-term letting. They are mainly self-contained in terms of cooking, bath (or shower) and toilet facilities and do not have breakfast available for guests. Data for holiday flats, units and houses include short-term owner occupation as well as paying guest occupation.
 - *Visitor hostels* which provide accommodation to visitors on a bed basis (rather than by the room). This category does not include establishments providing charity type accommodation (e.g. Salvation Army hostels) nor hotels, motels and guest houses without in-room facilities which provide accommodation on a per room basis.
 - *Caravan parks* which provide either predominantly short-term (i.e. for periods of less than 2 months) or predominantly long-term (i.e. for periods of 2 months or more) accommodation to the general public and which provide powered sites for caravans and toilet, shower and laundry facilities for guests.

3 Data collected and published for each type of establishment (other than holiday flats, units and houses) include both long-term and short-term guests at these establishments.

4 Establishments which provide more than one type of accommodation (e.g. a motel with attached caravan park) are treated as two or more separate establishments. However, self-contained units, flats, cabins, etc. attached to hotels, motels or to caravan parks are included in the capacity for those establishments and not treated as separate holiday flat, unit or house establishments.

AUSTRALIAN STANDARD GEOGRAPHICAL CLASSIFICATION

5 Statistics presented in this publication have been classified according to the Australian Standard Geographic Classification (ASGC), Edition 2.5. This classification incorporates a number of hierarchic structures of geographic areas. The appropriate spatial units of the main structure of the ASGC used in this publication are defined as follows.

EXPLANATORY NOTES

AUSTRALIAN STANDARD
GEOGRAPHICAL CLASSIFICATION
continued

STATISTICAL LOCAL AREAS (SLAs) are the smallest types of spatial units in the ASGC for which tourist accommodation data are presented. They correspond either to legal Local Government Areas (LGAs) as defined under the Local Government Act 1936 or to suburbs in certain urban LGAs. Some LGAs are split into two or more parts, with each part forming a separate SLA. In all instances, LGA data can be derived by aggregating SLAs. The unincorporated area of Queensland also forms a SLA. In aggregate, SLAs cover the whole of the State without gaps or overlaps.

STATISTICAL SUBDIVISIONS (SSDs) consist of one or more SLAs and form the intermediate size spatial unit for the presentation of regional data.

STATISTICAL DIVISIONS (SDs) which consist of one or more SSDs are designed to be relatively homogeneous regions characterised by identifiable social and economic units within the region, under the unifying influence of one or more major towns or cities. The Brisbane Statistical Division comprises the Cities of Brisbane, Logan and Redcliffe and parts of the cities of Gold Coast and Ipswich, the Shires of Pine Rivers and Redland and parts of the Shires of Beaudesert and Caboolture.

STATISTICAL DISTRICTS have been defined around selected urban areas to provide comparable statistics over a period of time. These districts, which are intended to contain the anticipated urban spread for at least 20 years, are generally defined as having a population of 25,000 or more and experiencing urban growth beyond the LGA boundaries.

NOTE: As applicable from 1 July 1995, Edition 2.5 of the Australian Standard Geographic Classification (ASGC) reflected a number of important changes made to Local Government Areas (LGAs) and Statistical Local Areas (SLAs) in Queensland. In particular, Albert Shire has ceased to exist and has been largely absorbed into the new Gold Coast City, while Mulgrave Shire has been completely absorbed into the new Cairns City. There have also been a number of other changes which have had a lesser impact on the geographic classification of accommodation establishments. Further information is available from the *Australian Standard Geographic Classification, Edition 2.5* (1216.0). Maps and an explanatory key showing the new Statistical Divisions (SDs) and Statistical Local Areas (SLAs) are printed on pages 37 - 42.

UNPUBLISHED STATISTICS

6 The ABS may make available on request certain unpublished tourist accommodation statistics. A charge may be made for this information.

RELATED PUBLICATIONS

7 Publications for Australia, and each State and Territory, are released by the respective offices of the ABS. Other ABS publications which may be of interest include:

- *Directory of Tourism Statistics* (1130.0) (Irregular: first and latest issue; 1991)
- *Overseas Arrivals and Departures, Australia* (3401.0) (monthly)
- *Tourism Indicators, Australia* (8634.0) (quarterly)
- *Tourist Accommodation, Australia* (8635.0) (quarterly)

8 Current publications produced by the ABS are listed in the *Catalogue of Publications and Products* (1101.0). The ABS also issues the *Release Advice* (1105.0) on Tuesdays and Fridays which lists publications to be released in the next few days. Both the Catalogue and *Release Advice* are available from any ABS office.

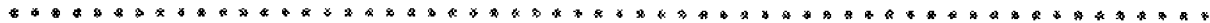
EXPLANATORY NOTES

SYMBOLS AND OTHER USAGES

n.a.	not available
n.p.	not available for publication but included in totals where applicable
r	revised
..	not applicable
—	nil
(C)	City
(S)	Shire
(T)	Town

9 Where figures have been rounded, discrepancies may occur between totals and the sums of the component items.

GLOSSARY



- Average length of stay** Average length of stay is expressed in numbers of days and calculated:
- for hotels, motels and guest houses, by dividing *Guest nights* by *Guest arrivals* and
 - for holiday flats, units and houses, by dividing *Unit nights occupied* by *Unit lettings*.
- Bed spaces** Three-quarter beds are counted as one bed space; double beds as two bed spaces. Cots are excluded.
- Capacity** Capacity in terms of *Guest rooms*, *Bed spaces*, *Holiday units* or *Caravan park sites*, etc. is the maximum number available to accommodate paying guests during the survey period. Capacity closed temporarily for seasonal reasons is included.
- Caravan park capacity** The total number of *On-site vans*, *Other powered sites*, *Unpowered sites* and *Cabins*, etc.
- Employment** The number of persons working at accommodation establishments at the end of the survey period (including working proprietors and those working on other than accommodation activities).
- Establishments** For hotels, motels and guest houses, caravan parks and visitor hostels, the number of establishments within the scope of the survey which operated for any part of the survey period, or which closed temporarily for the quarter for seasonal reasons.
- Guest arrivals** The total number of paying guests counted only on the first night they stayed at the accommodation establishment.
- Letting entitles** For holiday flats, units and houses, the number of owners, managers or real estate agents within the scope of the survey who operated for any part of the survey period.
- Occupancy** Occupancy in terms of *Room nights*, *Unit nights* or *Site nights occupied* refers to the total number of nights each guest room, holiday unit or caravan park site, etc. was occupied during the survey period. NOTE: From September quarter 1992, caravan park sites, etc. permanently reserved for 2 months or more at the end of the survey period but only casually occupied by their tenants have been recorded continuously as *Site nights occupied* irrespective of whether the tenants of individual sites were in residence on any particular night.
- Occupancy in terms of *Guest nights* refers to the total number of nights each paying guest stayed during the survey period.
- Occupancy rates** *Occupancy rates* represent occupancy expressed as a percentage of total capacity available during the survey period, e.g.

$$\text{Room occupancy rate (\%)} \text{ for the period} = \frac{\text{Room nights occupied}}{(\text{Guest rooms}) \times (\text{No. of days in the period})} \times 100$$

providing that, for establishments closing (other than for seasonal reasons) or opening during the survey period, the denominator of the above expression includes only operating periods.

GLOSSARY

- Other sites permanently reserved** The total number of powered and unpowered sites, on-site vans and cabins, etc. continuously let for 2 months or more by the end of the survey period to tenants who occupy the sites only on a casual or sporadic basis. Separate data for this item are available only from September quarter 1992.
- Room nights available** The number of guest rooms available multiplied by the number of days for which they were available during the survey period. Including operating periods only for establishments closing (other than for seasonal reasons) or opening during the survey period.
- Sites occupied by long-term guests** The total number of sites, etc. occupied at the end of the survey period by guests who have stayed continuously for 2 months or more.
- Star grading** The grading of hotels and motels with facilities based on the classification system used by members of the Australian Automobile Association (AAA). The gradings are allocated according to a points system based on the amenities and facilities available to guests. Details of the grading scheme are contained in the RACV-RAASA members' publication *Accommodation Australia*, or the individual tour guides produced by members of the AAA. For the purpose of classifying establishments to a star grading in this publication, 'half star gradings are ignored (e.g. a two and a half star grading has been shown as two star).
- Takings from accommodation** Revenue received from the provision of accommodation. Takings from meals are excluded. Takings from accommodation for each month generally represent the takings received during that month. Where payments are received in advance of, or after, the provision of accommodation to guests, the monthly figure for takings from accommodation may not necessarily bear a direct relationship to the number of guests accommodated during the month. Rental and storage fees paid to caravan parks for the keeping of private vans in parks are included in the takings of the month they are received.
- Unit lettings** The total number of times a holiday flat, unit or house was occupied by a new tenant, counted only on the first night it was occupied by the new tenant.

APPENDIX

TOURIST ACCOMMODATION, QUEENSLAND

TIME SERIES STATISTICS AVAILABLE		HM	HU	CP	VH
	Brisbane Statistical Division	HM	HU	CP	VH
	Brisbane City (SSD)	HM	HU	CP	
	Brisbane City (SSD)	Hotels			
	Brisbane City (SSD)	Motels			
	Ascot	HM			
	Aspley	HM		CP	
	Brisbane City Core (a)	HM	HU		
	City - Inner and Remainder	HM			
	Kangaroo Point	HM			
	Spring Hill	HM			
	Brisbane City Core (a)				
	- establishments with more than 50 rooms	HM			
	Brisbane City Core (a)	Hotels			
	Brisbane City Core (a)	Motels			
	Eight Mile Plains			CP	
	Hamilton	HM			
	Gold Coast (C) - Part A (SSD) (b)(c)			CP	
	Logan City (SSD)	HM		CP	
	Redcliffe City (SSD)	HM		CP	
	Redland Shire (SSD)	HM		CP	
	North Stradbroke and Coochiemudlo Islands		HU		
	Moreton Statistical Division	HM		CP	VH
	Boonah (S)	HM		CP	
	Caloundra (C) - Parts A and B	HM	HU	CP	
	Esk (S)	HM		CP	
	Gold Coast (C) - Part B (SSD) (b)(c)		HU	CP	VH
	Biggera Waters		HU		
	Bilinga	HM			
	Broadbeach		HU		
	Burleigh Heads	HM	HU		
	Coolangatta	HM	HU		
	Curumbin		HU		
	Labrador	HM	HU		
	Main Beach - Broadwater		HU		
	Mermaid Beach	HM	HU		
	Miami	HM	HU		
	Palm Beach	HM	HU		
	Southport	HM			
	Surfers Paradise	HM	HU		
	Tugun		HU		
	Maroochy (S) - Parts A and B	HM		CP	
	Maroochy (S) - Part A		HU		
	Noosa (S) - Parts A and B	HM	HU	CP	
	Wide Bay - Burnett Statistical Division	HM	HU	CP	VH
	Bundaberg (C)	HM		CP	
	Burnett (S) - Parts A and B	HM	HU	CP	
	Cooloola (S)	HM		CP	
	Hervey Bay (C)	HM	HU	CP	
	Isis (S)	HM			
	Kingaroy (S)	HM			
	Kolan (S)	HM			
	Maryborough (C)	HM		CP	
	Miriam Vale (S)	HM		CP	
	Nanango (S)	HM		CP	
	Darling Downs Statistical Division	HM		CP	
	Chinchilla (S)	HM			
	Dalby (T)	HM			
	Goondiwindi (T)	HM		CP	
	Inglewood (S)	HM		CP	
	Jondaryan (S)	HM			
	Murilla (S)	HM		CP	
	Stanthorpe (S)	HM		CP	
	Taroom (S)	HM			
	Toowoomba (C)	HM		CP	
	Warwick (S)	HM		CP	

APPENDIX

TIME SERIES STATISTICS AVAILABLE		HM		CP	
	South-West Statistical Division	HM		CP	
	Balonne (S)	HM			
	Murweh (S)	HM			
	Roma (T)	HM			
	Fitzroy Statistical Division	HM	HU	CP	
	Banana (S)			CP	
	Banana (S), Fitzroy (S) and Mt Morgan (S)	HM			
	Bauhinia (S)	HM			
	Calliope (S) – Parts A and B	HM		CP	
	Duarina (S)	HM			
	Emerald (S)	HM		CP	
	Gladstone (C)	HM		CP	
	Livingstone (S)	HM		CP	
	Rockhampton (C)	HM		CP	
	Rockhampton (C)	Hotels			
	Rockhampton (C)	Motels			
	Central-West Statistical Division	HM		CP	
	Barcaldine (S)	HM			
	Longreach (S)	HM			
	Mackay Statistical Division	HM	HU	CP	VH
	Belyando (S)	HM			
	Broadsound (S)			CP	
	Mackay (C) – Parts A and B	HM		CP	
	Mirani (S)			CP	
	Sarina (S)	HM		CP	
	Whitsunday (S)	HM	HU	CP	
	Northern Statistical Division	HM	HU	CP	VH
	Bowen (S)	HM		CP	
	Burdekin (S)	HM		CP	
	Charters Towers (C)	HM			
	Dalrymple (S)			CP	
	Hinchinbrook (S)	HM		CP	
	Townsville (C) – Parts A and B	HM	HU	CP	
	City	HM			
	Magnetic Island		HU		VH
	North Ward – Castle Hill	HM	HU		
	Rosslea	HM			
	Townsville (C) – Parts A and B	Hotels			
	Townsville (C) – Parts A and B	Motels			
	Far North Statistical Division	HM	HU	CP	VH
	Atherton (S)	HM			
	Atherton (S), Cardwell (S), Douglas (S), Eacham (S), and Johnstone (S)	HM			
	Atherton (S) and Eacham (S)	HM		CP	
	Atherton (S), Eacham (S), Herberton (S) and Mareeba (S)	HM			
	Atherton (S), Eacham (S), Herberton (S) and Mareeba (S)	Hotels			
	Atherton (S), Eacham (S), Herberton (S) and Mareeba (S)	Motels			
	Cairns (C) – Parts A and B (c)	HM	HU	CP	VH
	Cairns (C) – Parts A and B (c)	Hotels			
	Cairns (C) – Parts A and B (c)	Motels			
	Cardwell (S)	HM		CP	
	Douglas (S)	HM	HU	CP	VH
	Eacham (S)	HM			
	Herberton (S)	HM		CP	
	Johnstone (S)	HM		CP	
	Mareeba (S)	HM		CP	
	North-West Statistical Division	HM		CP	
	Carpentaria (S)	HM			
	Cloncurry (S)	HM			
	Flinders (S)	HM			
	Mount Isa (C)	HM		CP	
	Total Queensland	HM	HU	CP	VH
	By establishment size (number of rooms)				
	1–9, 10–15, 16–25, 26–50, 51–100, 101 & over	HM			
	By star grading				
	1, 2, 3, 4, 5, Ungraded	HM			
	Total Queensland	Hotels			
	Total Queensland	Motels			

APPENDIX

TIME SERIES STATISTICS AVAILABLE

Other geographic aggregations

Beaudesert (S) - Parts A and B (b)	HM		CP	
Caboolture (S) - Parts A and B (b)	HM		CP	
Gold Coast (C) - Parts A and B (b) (c)	HM	HU	CP	VH
Gold Coast (C) - Parts A and B (b) (c)	Hotels			
Gold Coast (C) - Parts A and B (b) (c)	Motels			
Gold Coast (C) - Parts A and B (b) (c)				
By establishment size (number of rooms)				
1-9, 10-15, 16-25, 26-50, 51-100, 101 & over	HM			
Ipswich (C) - Parts A and B	HM		CP	
Moreton and Darling Downs (SDs)		HU		
Sunshine Coast Statistical District (d)	HM	HU	CP	
Sunshine Coast Statistical District (d)	Hotels			
Sunshine Coast Statistical District (d)	Motels			
Great Barrier Reef islands (e)	HM			
Mackay (C) and Whitsunday (S)	HM			
Balance	HM			

Queensland regions by star grading

Brisbane City (SSD)	
1-2 and ungraded, 3, 4, 5	HM
Brisbane Statistical Division	
1-2, 3, 4, 5, Ungraded	HM
Gold Coast (C) - Parts A and B (b) (c)	
1-2, 3, 4, 5, Ungraded	HM
Sunshine Coast Statistical District (d)	
1-2, 3, 4-5, Ungraded	HM
Bundaberg (C), Hervey Bay (C), Isis (S), Maryborough (C) and Burnett (S)	
1-2, 3-4, Ungraded	HM
Stanthorpe (S), Toowoomba (C) and Warwick (S)	
1-2 and ungraded, 3-4	HM
Calliope (S) and Gladstone (C)	
1-2, 3-4 and ungraded	HM
Livingstone (S) and Rockhampton (C)	
1-2, 3-4 and ungraded	HM
Mackay (C) and Whitsunday (S)	
1-2, 3-5, Ungraded	HM
Townsville (C)	
1-2 and ungraded, 3-5	HM
Atherton (S), Cardwell (S), Douglas (S), Eacham(S) and Johnstone (S)	
1-2, 3, 4-5, Ungraded	HM
Cairns (C) - Parts A and B (c)	
1-2, 3, 4-5, Ungraded	HM

NOTE: Establishment type codes are used above to denote the following

- HM - Licensed hotels, motels and guest houses with facilities
- Hotels - Licensed hotels with facilities
- Motels - Motels and guest houses with facilities
- HU - Holiday flats, units and houses
- CP - Caravan parks (total short-term and long-term)
- VH - Visitor hostels

- (a) Brisbane City Core comprises the suburbs of Bowen Hills, City, Dutton Park, Fortitude Valley, Herston, Highgate Hill, Kangaroo Point, Kelvin Grove, Milton, New Farm, Newstead, Paddington, Red Hill, South Brisbane, Spring Hill, West End and Woolloongabba.
- (b) Gold Coast and Ipswich Cities and Beaudesert and Caboolture Shires straddle the boundary line between Brisbane and Moreton Statistical Divisions.
- (c) See Explanatory Notes for details of boundary changes effective from 1 July 1995.
- (d) Sunshine Coast Statistical District comprises the more urban coastal positions of Caloundra City and Maroochy and Noosa Shires.
- (e) Great Barrier Reef island establishments are those on coastal island from Lady Elliot in the south to Lizard in the north.

STATISTICAL DIVISIONS AND STATISTICAL LOCAL AREAS

QUEENSLAND (Effective 1 July 1995)

Brisbane

0551	Greenbank—Part A
0554	Beaudesert (S) Balance in BSD
1001	Acacia Ridge
1004	Albion
1007	Alderley
1012	Algerier
1015	Annerley
1018	Anstead
1023	Archerfield
1026	Ascot
1031	Ashgrove
1034	Aspley
1037	Bald Hills
1042	Balmoral
1045	Banyo
1048	Bardon
1053	Bellbowrie
1057	Belmont-Mackenzie
1062	Berrinba-Karawatha
1064	Boondall
1067	Bowen Hills
1072	Bracken Ridge
1075	Bridgeman Downs
1078	Brighton
1083	Brookfield (incl. Mt Coot-tha)
1086	Bulimba
1091	Burbank
1094	Calamvale
1097	Camp Hill
1102	Cannon Hill
1105	Capalaba West
1108	Carindale
1113	Carina
1116	Carina Heights
1121	Carseldine
1124	Chandler
1127	Chapel Hill
1132	Chelmer
1135	Chermside
1138	Chermside West
1143	City - Inner
1146	City - Remainder
1151	Clayfield
1154	Coopers Plains
1157	Coorparoo
1162	Corinda
1167	Darra-Sumner
1173	Deagon
1176	Doolandella-Forest Lake
1184	Durack
1187	Dutton Park
1195	East Brisbane
1198	Eight Mile Plains
1203	Ellen Grove
1206	Enoggera
1211	Everton Park
1214	Fairfield
1217	Ferry Grove
1222	Fig Tree Pocket
1228	Fortitude Valley - Inner
1233	Fortitude Valley - Remainder
1236	Geebung
1241	Graceville
1244	Grange
1247	Greenslopes
1252	Gumdale
1255	Hamilton
1258	Hawthorne
1265	Hemmant-Lytton
1271	Hendra
1274	Herston
1277	Highgate Hill
1282	Holland Park
1285	Holland Park West
1288	Inala

Brisbane

1293	Indooroopilly
1296	Jamboree Heights
1301	Jindalee
1304	Kangaroo Point
1312	Kedron
1315	Kelvin Grove
1318	Kenmore
1323	Kenmore Hills
1326	Keperra
1331	Kuraby
1337	Lota
1345	Lutwyche
1353	McDowall
1356	MacGregor
1364	Manly
1367	Manly West
1372	Mansfield
1375	Middle Park
1378	Milton
1383	Mitchelton
1386	Moggill
1391	Moorooka
1394	Moreton Island
1397	Morningside
1402	Mount Gravatt
1405	Mount Gravatt East
1408	Mount Ommaney
1413	Murarie
1416	Nathan
1421	New Farm
1424	Newmarket
1427	Newstead
1432	Norman Park
1435	Northgate
1438	Nudgee
1443	Nudgee Beach
1446	Nundah
1451	Oxley
1454	Paddington
1456	Pallara-Heathwood-Larapinta
1463	Parkinson-Drewvale
1465	Pinjarra Hills
1467	Pinkenba-Eagle Farm
1473	Pullenvale
1476	Ransome
1481	Red Hill
1484	Richlands
1487	Riverhills
1492	Robertson
1495	Rochedale
1498	Rocklea
1503	Runcom
1506	St Lucia
1511	Salisbury
1514	Sandgate
1517	Seventeen Mile Rocks
1522	Sherwood
1525	South Brisbane
1528	Spring Hill
1533	Stafford
1536	Stafford Heights
1541	Stretton
1547	Sunnybank
1552	Sunnybank Hills
1556	Taigum-Fitzgibbon
1558	Taringa
1563	Tarragindi
1566	The Gap (incl. Enoggera Reservoir)
1571	Tingalpa
1574	Toowong
1582	Upper Brookfield
1585	Upper Kedron
1588	Upper Mount Gravatt
1593	Virginia
1596	Wacol

STATISTICAL DIVISIONS AND STATISTICAL LOCAL AREAS

QUEENSLAND (Effective 1 July 1995)

Brisbane

1601 Wakerley
 1604 Waveill Heights
 1607 West End
 1612 Westlake
 1615 Willawong
 1618 Wilston
 1623 Windsor
 1626 Wishart
 1631 Woolloongabba
 1634 Woollooin
 1637 Wynnum
 1642 Wynnum West
 1645 Yeerongpilly
 1648 Yeronga
 1653 Zillmere
 2001 Caboolture (S)—Part A
 3461 Beenleigh
 3463 Bethania—Waterford
 3466 Eagleby
 3471 Edens Landing—Holmview
 3476 Mount Warren Park
 3494 Windaroo-Bannockburn
 3496 Gold Coast (C) Balance in BSD
 3961 Bellbird Park
 3964 Camira
 3967 Ipswich (C)—Central
 3972 Karalee
 3975 Ipswich (C) Balance in BSD—Nth
 3978 Ipswich (C) Balance in BSD—Sth
 4601 Browns Plains
 4603 Carbrook—Cornubia
 4605 Daisy Hill—Priestdale
 4608 Greenbank—Part B
 4612 Kingston
 4615 Loganholme
 4618 Loganlea
 4623 Marsden
 4631 Rochedale South
 4634 Shailer Park
 4637 Slacks Creek
 4642 Springwood
 4645 Tanah Merah
 4651 Underwood
 4654 Waterford West
 4656 Woodridge
 4663 Logan (C) Balance
 5951 Albany Creek
 5954 Arana Hills
 5957 Bray Park
 5962 Everton Hills
 5965 Ferny Hills
 5968 Kallangur
 5973 Lawnton
 5974 Petrie
 5976 Strathpine
 5983 Pine Rivers (S) Balance
 6200 Redcliffe (C)
 6251 Alexandra Hills
 6254 Birkdale
 6257 Capalaba
 6262 Cleveland
 6264 Ormiston
 6265 Redland Bay
 6267 Sheldon—Mount Cotton
 6268 Thomeside
 6271 Thornlands
 6273 Victoria Point
 6276 Wellington Point
 6283 Redland (S) Balance

Moreton

0557 Beaudesert (S)—Part B
 0800 Boonah (S)
 2031 Caboolture (S)—Part B
 2131 Caloundra (C)—Part A
 2134 Caloundra (C)—Part B
 3050 Esk (S)
 3250 Gatton (S)
 3497 Arundel
 3501 Ashmore
 3504 Benowa
 3507 Biggera Waters
 3512 Bilinga
 3513 Broadbeach
 3515 Broadbeach Waters
 3517 Bundall
 3521 Burleigh Heads
 3523 Burleigh Waters
 3525 Carrara—Merrimac
 3527 Coolangatta
 3531 Coombabah
 3533 Currumbin
 3535 Currumbin Waters
 3537 Eianora
 3541 Ernest—Molendinar
 3543 Helensvale
 3545 Hollywell
 3547 Hope Island
 3548 Kerrydale—Stephens
 3553 Labrador
 3555 Main Beach—Broadwater
 3557 Mermaid Beach
 3561 Mermaid Waters
 3563 Miami
 3565 Mudgeeraba
 3567 Nerang
 3571 Oxenford
 3573 Palm Beach
 3575 Paradise Point
 3577 Parkwood
 3581 Robina—Clear Island Waters
 3583 Runaway Bay
 3585 Southport
 3587 Surfers Paradise
 3591 Tugun
 3593 Worongary—Tallai
 3595 Gold Coast (C)—Part B Balance
 3983 Ipswich (C)—Part B
 4250 Kilcoy (S)
 4450 Laidley (S)
 4901 Maroochy (S)—Part A
 4904 Maroochy (S)—Part B
 5751 Noosa (S)—Part A
 5754 Noosa (S)—Part B

STATISTICAL DIVISIONS AND STATISTICAL LOCAL AREAS

QUEENSLAND (Effective 1 July 1995)

Wide Bay-Burnett

0700 Biggenden (S)
 1810 Bundaberg (C)
 1981 Burnett (S)—Part A
 1984 Burnett (S)—Part B
 2531 Cooloolo (S) (excl. Gympie)
 2534 Cooloolo (S)—Gympie only
 2950 Eidsvold (S)
 3300 Gayndah (S)
 3750 Hervey Bay (C)
 4000 Isis (S)
 4300 Kilkivan (S)
 4350 Kingaroy (S)
 4400 Kolan (S)
 4950 Maryborough (C)
 5100 Miriam Vale (S)
 5150 Monto (S)
 5450 Mundubbera (S)
 5500 Murgon (S)
 5650 Nanango (S)
 5900 Pery (S)
 6850 Tiaro (S)
 7450 Wondai (S)
 7500 Wooroo (S)

Darling Downs

2150 Cambooya (S)
 2350 Chinchilla (S)
 2400 Clifton (S)
 2550 Crow's Nest (S)
 2650 Dalby (T)
 3600 Goondiwindi (T)
 3900 Inglewood (S)
 4200 Jondaryan (S)
 5000 Millmerran (S)
 5550 Murilla (S)
 6050 Pittsworth (S)
 6450 Rosalie (S)
 6600 Stanthorpe (S)
 6700 Tara (S)
 6750 Taroom (S)
 6900 Toowoomba (C)
 7100 Waggamba (S)
 7150 Wambo (S)
 7262 Warwick (S)—Central
 7263 Warwick (S)—East
 7265 Warwick (S)—North
 7266 Warwick (S)—West

South-West

0300 Balonne (S)
 0650 Bendemere (S)
 0850 Booringa (S)
 1750 Bulloo (S)
 1850 Bungil (S)
 5600 Murweh (S)
 5800 Paroo (S)
 6150 Quilpie (S)
 6400 Roma (T)
 7200 Warroo (S)

Fitzroy

0350 Banana (S)
 0500 Bauhinia (S)
 2101 Calliope (S)—Part A
 2104 Calliope (S)—Part B
 2850 Duarlinga (S)
 3000 Emerald (S)
 3151 Fitzroy (S)—Part A
 3154 Fitzroy (S)—Part B
 3350 Gladstone (C)
 4100 Jericho (S)
 4550 Livingstone (S)
 5350 Mount Morgan (S)
 5850 Peak Downs (S)
 6350 Rockhampton (C)

Central-West

0150 Aramac (S)
 0400 Barcaldine (S)
 0450 Barcoo (S)
 0750 Blackall (S)
 0900 Boulia (S)
 2750 Diamantina (S)
 3850 Ilfracombe (S)
 4050 Isisford (S)
 4700 Longreach (S)
 6650 Tambo (S)
 7400 Winton (S)

Mackay

0600 Belyando (S)
 1700 Broadsound (S)
 4761 Mackay (C)—Part A
 4764 Mackay (C)—Part B
 5050 Mirani (S)
 5700 Nebo (S)
 6550 Sarina (S)
 7330 Whitsunday (S)

Northern

0950 Bowen (S)
 1900 Burdekin (S)
 2300 Charters Towers (C)
 2700 Dalrymple (S)
 3800 Hinchinbrook (S)
 6801 Kelso
 6804 Kirwan
 6807 Thuringowa (C)—Part A Balance
 6831 Thuringowa (C)—Part B
 7001 Aitkenvale
 7003 City
 7007 Cranbrook
 7012 Currajong
 7014 Douglas
 7015 Garbutt
 7018 Gulliver
 7023 Heatley
 7026 Hermit Park
 7027 Hyde Park—Mysterton
 7031 Magnetic Island
 7033 Mount Louisa—
 Mount St John—Bohle
 7034 Mundingburra
 7038 Murray
 7041 North Ward—Castle Hill
 7044 Oonoonba—Idalia-Cluden
 7047 Pallarenda—Shelley Beach
 7051 Pimlico
 7054 Railway Estate
 7058 Rosslea
 7062 Rows Bay—Belgian Gardens
 7065 South Townsville
 7068 Stuart—Roseneath
 7071 Vincent
 7074 West End
 7078 Wulguru
 7084 Townsville (C)—Part B

STATISTICAL DIVISIONS AND STATISTICAL LOCAL AREAS

.....

QUEENSLAND (Effective 1 July 1995)

Far North

0200 Atherton (S)
0250 Aurukun (S)
2061 Cairns (C)—Part A
2064 Cairns (C)—Part B
2200 Cardwell (S)
2501 Cook (S) (excl. Weipa)
2504 Cook (S)—Weipa only
2600 Croydon (S)
2800 Douglas (S)
2900 Eacham (S)
3100 Etheridge (S)
3700 Herberton (S)
4150 Johnstone (S)
4850 Mareeba (S)
6950 Torres (S)

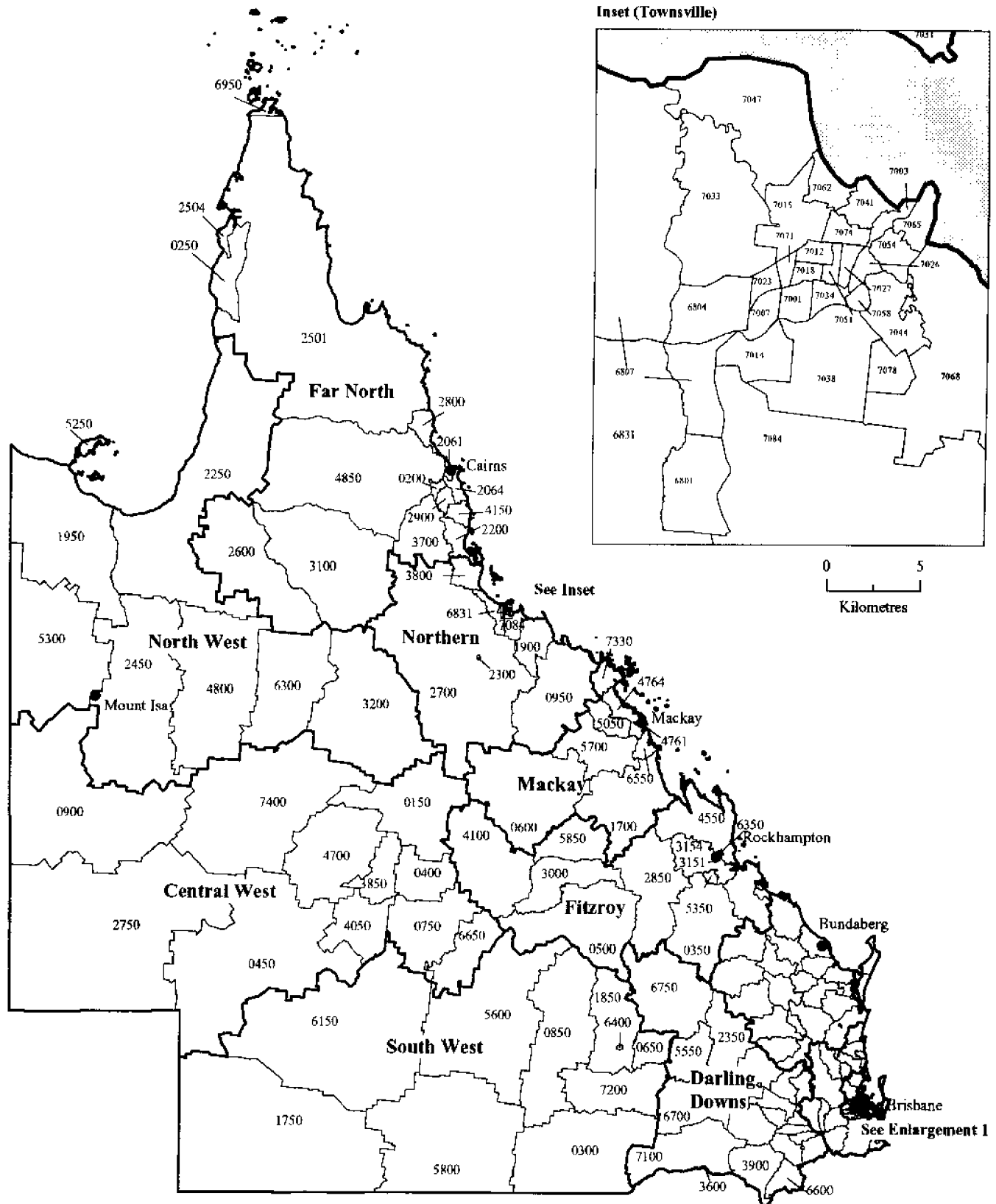
North-West

1950 Burke (S)
2250 Carpentaria (S)
2450 Cloncurry (S)
3200 Flinders (S)
4800 McKinlay (S)
5250 Mornington (S)
5300 Mount Isa (C)
6300 Richmond (S)
8809 Unincorporated Islands

Off-Shore Areas and Migratory

9779 Off-Shore Areas and Migratory

Statistical Divisions and Statistical Local Areas, 1 July 1995

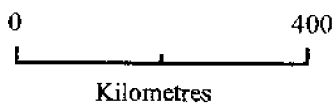


Statistical Divisions

Fitzroy

Statistical Local Areas

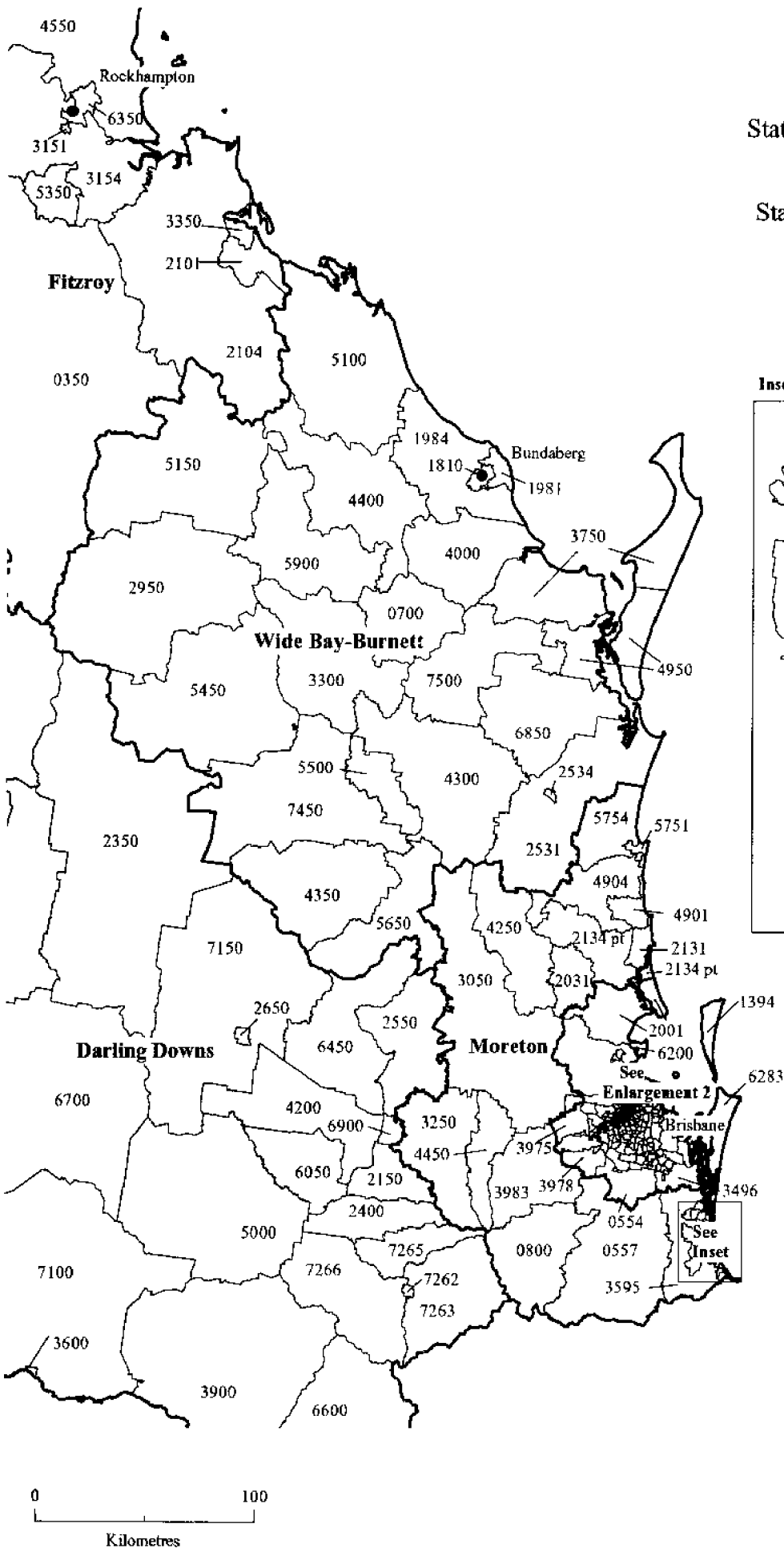
5800



Source: ASGC Edition 2.5
 Produced by: Area Classification
 © Commonwealth of Australia, 1995

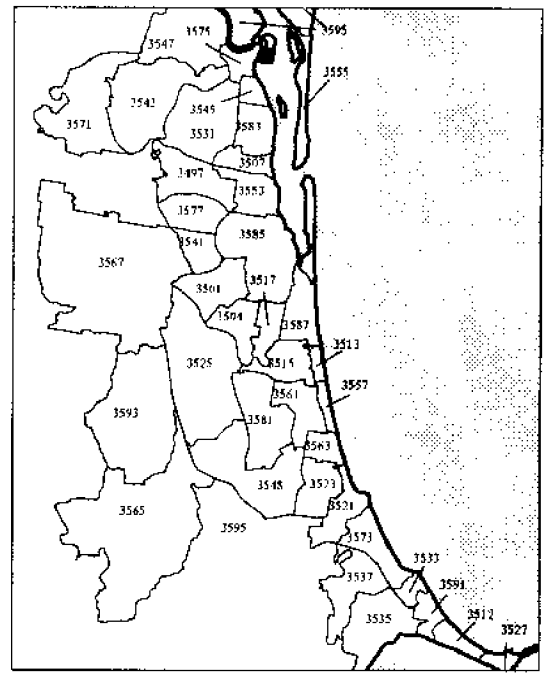
Queensland - Enlargement 1

Statistical Divisions and Statistical Local Areas, 1 July 1995

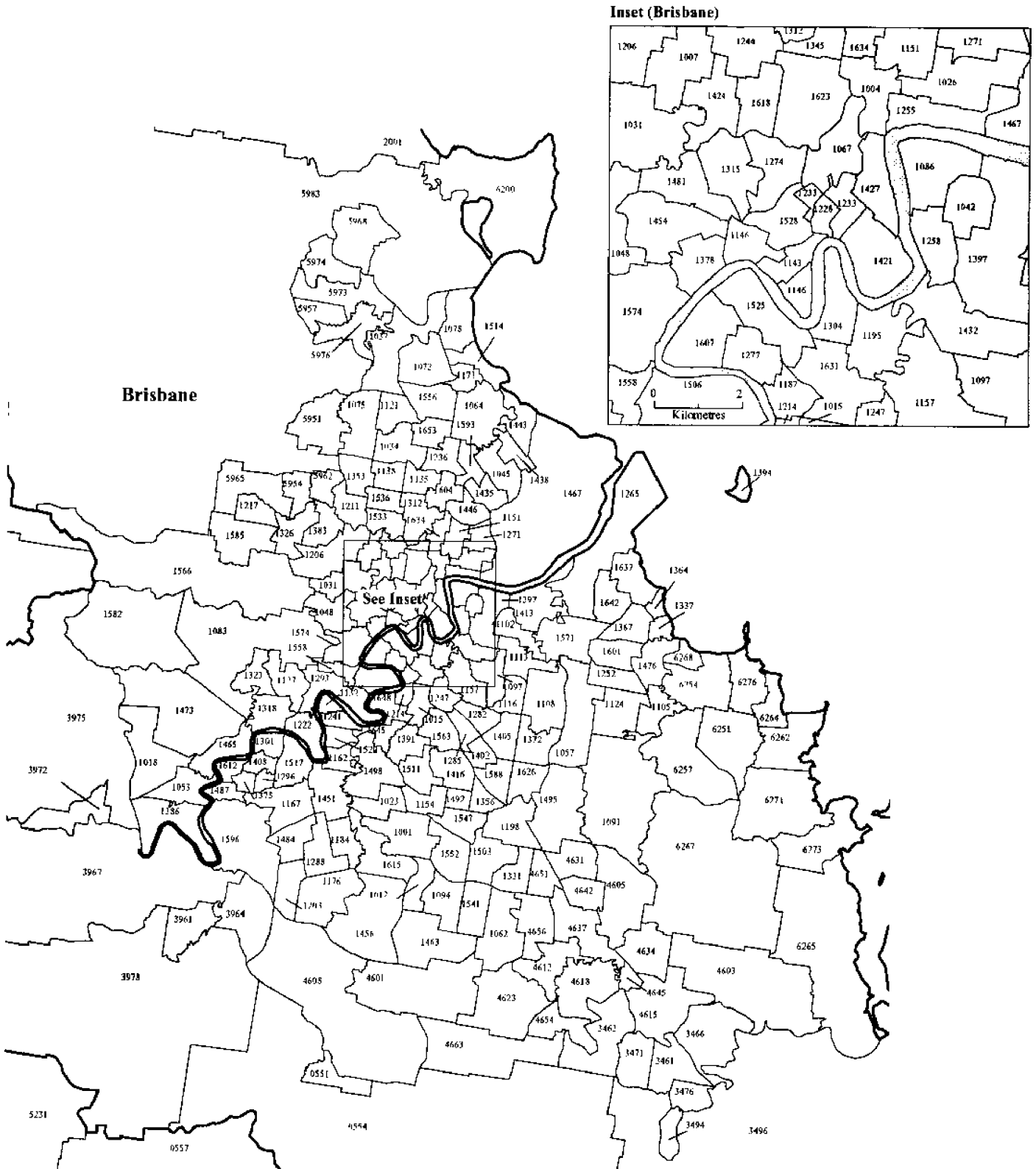


Moreton
 Statistical Divisions _____
 2101
 Statistical Local Areas _____

Inset (Gold Coast)



Statistical Divisions and Statistical Local Areas, 1 July 1995



Inset (Brisbane)

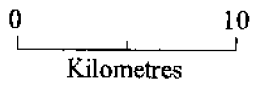
Brisbane

See Inset

Brisbane

Statistical Divisions

Statistical Local Areas





FOR MORE INFORMATION

The ABS publishes a wide range of information on Australia's economic and social conditions. A catalogue of publications and products is available from any of our offices (see below).

INFORMATION CONSULTANCY SERVICES

Information tailored to special needs of clients can be obtained from the Information Consultancy Service available at ABS Offices (see below).

ABS PRODUCTS

A large number of ABS products is available from the ABS Bookshops (see below). The ABS also provides a subscription service – you can telephone the ABS Subscription Service Australia wide toll free on 1800 0206 08.

ELECTRONIC SERVICES

A large range of data is available via on-line services, diskette, magnetic tape, tape cartridge and CD ROM. For more details about our electronic data services, contact any ABS office (see below) or email us at:

X.400 (C:Australia,PUB:Telememo,O:ABS,FN:STAT,SN:INFO)
Internet Stat.info@abs.telememo.au
Keylink STAT.INFO/ABS

You can visit us on the Internet at: <http://www.statistics.gov.au>

GENERAL SALES AND INQUIRIES

※ Sydney 02 268 4611 ※ Adelaide 08 237 7100
※ Melbourne 03 9615 7755 ※ Hobart 002 20 5800
※ Brisbane 07 3222 6351 ※ Darwin 089 43 2111
※ Perth 09 360 5140 ※ Canberra 06 252 6627

■ Information Services, ABS
PO Box 10, Belconnen ACT 2616



2863530012954
ISSN 0725-394X

RRP \$16.00

© Commonwealth of Australia 1996

Produced by the Australian Government Publishing Service